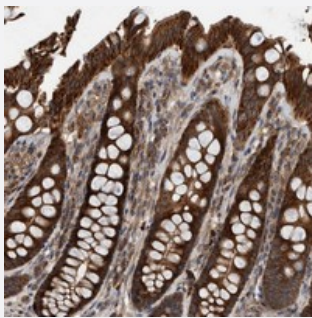


ABCA5 polyclonal antibody

Catalog # PAB21472 Size 100 uL

Applications



Immunohistochemistry (Formalin/PFA-fixed paraffin-embedded sections)

Immunohistochemical staining of human colon with ABCA5 polyclonal antibody (Cat # PAB21472) strong cytoplasmic positivity in glandular cells at 1:20-1:50 dilution.

Specification

Product Description	Rabbit polyclonal antibody raised against recombinant ABCA5.
Immunogen	Recombinant protein corresponding to amino acids of human ABCA5.
Sequence	PNKKYEEVPNIELNPMDKFTLSNLILGYTPVTNITSSIMQKVSTDHLPDVITEEYTNEKEMLTSSLSK PSNFV
Host	Rabbit
Reactivity	Human
Form	Liquid
Purification	Antigen affinity purification
Isotype	IgG
Recommend Usage	Immunohistochemistry (1:20-1:50) The optimal working dilution should be determined by the end user.
Storage Buffer	In PBS, pH 7.2 (40% glycerol, 0.02% sodium azide)

Storage Instruction

Store at 4°C. For long term storage store at -20°C.
Aliquot to avoid repeated freezing and thawing.

Note

This product contains sodium azide: a POISONOUS AND HAZARDOUS SUBSTANCE which should be handled by trained staff only.

Applications

- Immunohistochemistry (Formalin/PFA-fixed paraffin-embedded sections)

Immunohistochemical staining of human colon with ABCA5 polyclonal antibody (Cat # PAB21472) strong cytoplasmic positivity in glandular cells at 1:20-1:50 dilution.

Gene Info — ABCA5

Entrez GeneID[23461](#)**Protein Accession#**[Q8WWZ7](#)**Gene Name**

ABCA5

Gene Alias

ABC13, DKFZp451F117, DKFZp779N2435, EST90625, FLJ16381

Gene Description

ATP-binding cassette, sub-family A (ABC1), member 5

Gene Ontology[Hyperlink](#)**Gene Summary**

The membrane-associated protein encoded by this gene is a member of the superfamily of ATP-binding cassette (ABC) transporters. ABC proteins transport various molecules across extra- and intracellular membranes. ABC genes are divided into seven distinct subfamilies (ABC1, MDR/TA P, MRP, ALD, OABP, GCN20, and White). This encoded protein is a member of the ABC1 subfamily. Members of the ABC1 subfamily comprise the only major ABC subfamily found exclusively in multicellular eukaryotes. This gene is clustered among 4 other ABC1 family members on 17q24, but neither the substrate nor the function of this gene is known. Alternative splicing of this gene results in several transcript variants; however, not all variants have been fully described. [provided by RefSeq]

Other Designations

ATP-binding cassette A5|ATP-binding cassette, sub-family A , member 5

Pathway

- [ABC transporters](#)

Disease

- [Genetic Predisposition to Disease](#)
- [Lung Neoplasms](#)
- [Pulmonary Disease](#)
- [Urinary Bladder Neoplasms](#)
- [Werner syndrome](#)