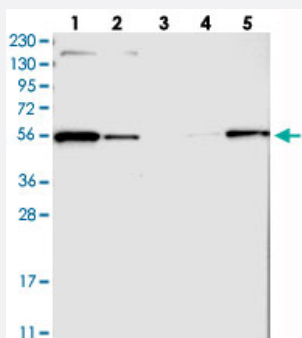


MFSD11 polyclonal antibody

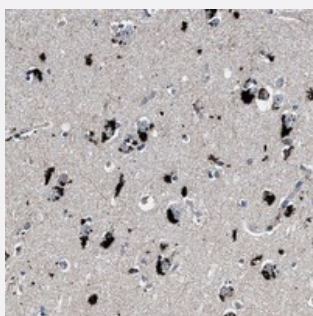
Catalog # PAB21467 Size 100 uL

Applications



Western Blot

Western blot analysis of Lane 1: RT-4, Lane 2: U-251 MG, Lane 3: Human Plasma, Lane 4: Liver, Lane 5: Tonsil with MFSD11 polyclonal antibody (Cat # PAB21467) at 1:250-1:500 dilution.



Immunohistochemistry (Formalin/PFA-fixed paraffin-embedded sections)

Immunohistochemical staining of human hippocampus with MFSD11 polyclonal antibody (Cat # PAB21467) shows strong positivity in neurons at 1:20-1:50 dilution.

Specification

Product Description	Rabbit polyclonal antibody raised against recombinant MFSD11.
Immunogen	Recombinant protein corresponding to amino acids of human MFSD11.
Sequence	DSENVLGEDESSDDQDMEVNESAQNNLTKAVDAFKKSFKLCVTKEML
Host	Rabbit
Reactivity	Human
Form	Liquid
Purification	Antigen affinity purification

Isotype	IgG
Recommend Usage	Immunohistochemistry (1:20-1:50) Western Blot (1:250-1:500) The optimal working dilution should be determined by the end user.
Storage Buffer	In PBS, pH 7.2 (40% glycerol, 0.02% sodium azide)
Storage Instruction	Store at 4°C. For long term storage store at -20°C. Aliquot to avoid repeated freezing and thawing.
Note	This product contains sodium azide: a POISONOUS AND HAZARDOUS SUBSTANCE which should be handled by trained staff only.

Applications

- Western Blot

Western blot analysis of Lane 1: RT-4, Lane 2: U-251 MG, Lane 3: Human Plasma, Lane 4: Liver, Lane 5: Tonsil with MFSD11 polyclonal antibody (Cat # PAB21467) at 1:250-1:500 dilution.

- Immunohistochemistry (Formalin/PFA-fixed paraffin-embedded sections)

Immunohistochemical staining of human hippocampus with MFSD11 polyclonal antibody (Cat # PAB21467) shows strong positivity in neurons at 1:20-1:50 dilution.

Gene Info — MFSD11

Entrez GeneID	79157
Protein Accession#	O43934
Gene Name	MFSD11
Gene Alias	ET, FLJ20226, FLJ22196
Gene Description	major facilitator superfamily domain containing 11
Gene Ontology	Hyperlink
Other Designations	-