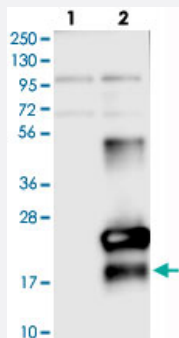


C9orf169 polyclonal antibody

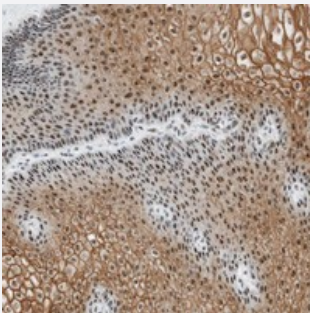
Catalog # PAB21462 Size 100 uL

Applications



Western Blot (Transfected lysate)

Western blot analysis of Lane 1: Negative control (vector only transfected HEK293T lysate), Lane 2: Over-expression Lysate (Co-expressed with a C-terminal myc-DDK tag (~3.1 kDa) in mammalian HEK293T cells) with C9orf169 polyclonal antibody (Cat # PAB21462) at 1:250-1:500 dilution.



Immunohistochemistry (Formalin/PFA-fixed paraffin-embedded sections)

Immunohistochemical staining of human esophagus with C9orf169 polyclonal antibody (Cat # PAB21462) shows nuclear and cytoplasmic positivity in squamous epithelial cells at 1:200-1:500 dilution.

Specification

Product Description	Rabbit polyclonal antibody raised against recombinant C9orf169.
Immunogen	Recombinant protein corresponding to amino acids of human C9orf169.
Sequence	PIQNQQAWQQPGNPYSSSRQAGLTYAGPPPVGRGDDIAHCCCCPCCHCCHCPPFCRCHSCCCVIS
Host	Rabbit
Reactivity	Human
Form	Liquid

Purification	Antigen affinity purification
Isotype	IgG
Recommend Usage	Immunohistochemistry (1:200-1:500) Western Blot (1:250-1:500) The optimal working dilution should be determined by the end user.
Storage Buffer	In PBS, pH 7.2 (40% glycerol, 0.02% sodium azide)
Storage Instruction	Store at 4°C. For long term storage store at -20°C. Aliquot to avoid repeated freezing and thawing.
Note	This product contains sodium azide: a POISONOUS AND HAZARDOUS SUBSTANCE which should be handled by trained staff only.

Applications

- Western Blot (Transfected lysate)

Western blot analysis of Lane 1: Negative control (vector only transfected HEK293T lysate), Lane 2: Over-expression Lysate (Co-expressed with a C-terminal myc-DDK tag (~3.1 kDa) in mammalian HEK293T cells) with C9orf169 polyclonal antibody (Cat # PAB21462) at 1:250-1:500 dilution.

- Immunohistochemistry (Formalin/PFA-fixed paraffin-embedded sections)

Immunohistochemical staining of human esophagus with C9orf169 polyclonal antibody (Cat # PAB21462) shows nuclear and cytoplasmic positivity in squamous epithelial cells at 1:200-1:500 dilution.

Gene Info — C9orf169

Entrez GeneID	375791
Protein Accession#	A8MQ03
Gene Name	C9orf169
Gene Alias	MGC59937
Gene Description	chromosome 9 open reading frame 169
Gene Ontology	Hyperlink
Other Designations	hypothetical protein LOC375791