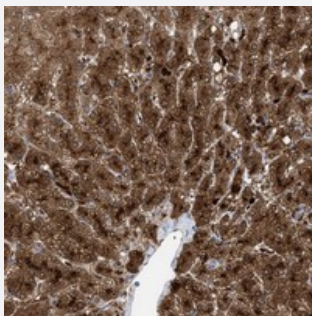


# MBTD1 polyclonal antibody

Catalog # PAB21459      Size 100 uL

## Applications



### Immunohistochemistry (Formalin/PFA-fixed paraffin-embedded sections)

Immunohistochemical staining of human liver with MBTD1 polyclonal antibody (Cat # PAB21459) shows strong cytoplasmic positivity in hepatocytes.

## Specification

Product Description	Rabbit polyclonal antibody raised against recombinant MBTD1.
Immunogen	Recombinant protein corresponding to amino acids of human MBTD1.
Sequence	TCWGDISENVRVEVPNTDCSLPTKVF <sup>W</sup> IAGIVKLAGYNALLRYEGFENDSGLDFWCNICGSDIHPV GWCAASGKPL
Host	Rabbit
Reactivity	Human
Form	Liquid
Purification	Antigen affinity purification
Isotype	IgG
Recommend Usage	Immunohistochemistry (1:50-1:200) The optimal working dilution should be determined by the end user.
Storage Buffer	In PBS, pH 7.2 (40% glycerol, 0.02% sodium azide)

**Storage Instruction**

Store at 4°C. For long term storage store at -20°C.  
Aliquot to avoid repeated freezing and thawing.

**Note**

This product contains sodium azide: a POISONOUS AND HAZARDOUS SUBSTANCE which should be handled by trained staff only.

## Applications

- Immunohistochemistry (Formalin/PFA-fixed paraffin-embedded sections)

Immunohistochemical staining of human liver with MBTD1 polyclonal antibody (Cat # PAB21459) shows strong cytoplasmic positivity in hepatocytes.

## Gene Info — MBTD1

**Entrez GeneID**[54799](#)**Protein Accession#**[Q05BQ5](#)**Gene Name**

MBTD1

**Gene Alias**

FLJ20055, FLJ42067, MGC126785, SA49P01

**Gene Description**

mbt domain containing 1

**Gene Ontology**[Hyperlink](#)**Other Designations**

-