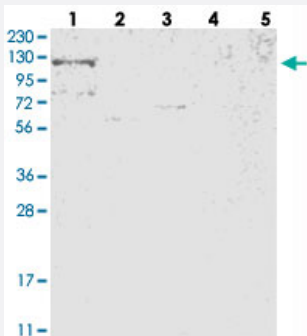


RBM33 polyclonal antibody

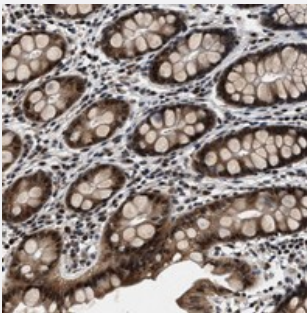
Catalog # PAB21450 Size 100 uL

Applications



Western Blot

Western blot analysis of Lane 1: RT-4, Lane 2: U-251 MG, Lane 3: Human Plasma, Lane 4: Liver, Lane 5: Tonsil with RBM33 polyclonal antibody (Cat # PAB21450) at 1:250-1:500 dilution.



Immunohistochemistry (Formalin/PFA-fixed paraffin-embedded sections)

Immunohistochemical staining of human rectum with RBM33 polyclonal antibody (Cat # PAB21450) shows cytoplasmic and nuclear positivity in glandular cells at 1:20-1:50 dilution.

Specification

| | |
|---------------------|---|
| Product Description | Rabbit polyclonal antibody raised against recombinant RBM33. |
| Immunogen | Recombinant protein corresponding to amino acids of human RBM33. |
| Sequence | QHPPQHQQHHHHHHLSVPPPLMPMSQPQFRPHVQTAQPQASSSRMQCPQRQGLRHNTTSQN VSKRPMQQMQPTAPRNSNLREL |
| Host | Rabbit |
| Reactivity | Human, Mouse |
| Form | Liquid |

| | |
|---------------------|--|
| Purification | Antigen affinity purification |
| Isotype | IgG |
| Recommend Usage | Immunohistochemistry (1:20-1:50) Western Blot (1:250-1:500) The optimal working dilution should be determined by the end user. |
| Storage Buffer | In PBS, pH 7.2 (40% glycerol, 0.02% sodium azide) |
| Storage Instruction | Store at 4°C. For long term storage store at -20°C. Aliquot to avoid repeated freezing and thawing. |
| Note | This product contains sodium azide: a POISONOUS AND HAZARDOUS SUBSTANCE which should be handled by trained staff only. |

Applications

- Western Blot

Western blot analysis of Lane 1: RT-4, Lane 2: U-251 MG, Lane 3: Human Plasma, Lane 4: Liver, Lane 5: Tonsil with RBM33 polyclonal antibody (Cat # PAB21450) at 1:250-1:500 dilution.

- Immunohistochemistry (Formalin/PFA-fixed paraffin-embedded sections)

Immunohistochemical staining of human rectum with RBM33 polyclonal antibody (Cat # PAB21450) shows cytoplasmic and nuclear positivity in glandular cells at 1:20-1:50 dilution.

Gene Info — RBM33

| | |
|--------------------|-------------------------------|
| Entrez GeneID | 155435 |
| Protein Accession# | Q96EV2 |
| Gene Name | RBM33 |
| Gene Alias | DKFZp434D1319, MGC20460, PRR8 |
| Gene Description | RNA binding motif protein 33 |
| Gene Ontology | Hyperlink |
| Other Designations | proline rich 8 |