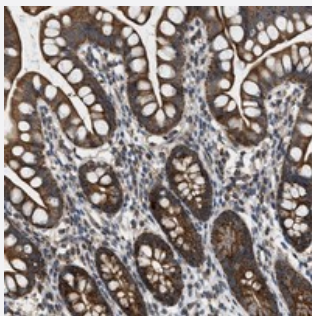


# SGSM2 polyclonal antibody

Catalog # PAB21436      Size 100 uL

## Applications



### Immunohistochemistry (Formalin/PFA-fixed paraffin-embedded sections)

Immunohistochemical staining of human small intestine with SGSM2 polyclonal antibody (Cat # PAB21436) shows strong granular cytoplasmic positivity in glandular cells.

## Specification

Product Description	Rabbit polyclonal antibody raised against recombinant SGSM2.
Immunogen	Recombinant protein corresponding to amino acids of human SGSM2.
Sequence	SGIQSSLDEGQSVGFEEEDGGGEEGSSGPGPAHTLREPQDPSQEK PQAGELEAGEELAAVCAAAAYTIELLDTVLNLHRIDKDVQRCDRNYWY
Host	Rabbit
Reactivity	Human
Form	Liquid
Purification	Antigen affinity purification
Isotype	IgG
Recommend Usage	Immunohistochemistry (1:200-1:500) The optimal working dilution should be determined by the end user.
Storage Buffer	In PBS, pH 7.2 (40% glycerol, 0.02% sodium azide)

**Storage Instruction**

Store at 4°C. For long term storage store at -20°C.  
Aliquot to avoid repeated freezing and thawing.

**Note**

This product contains sodium azide: a POISONOUS AND HAZARDOUS SUBSTANCE which should be handled by trained staff only.

## Applications

- Immunohistochemistry (Formalin/PFA-fixed paraffin-embedded sections)

Immunohistochemical staining of human small intestine with SGSM2 polyclonal antibody (Cat # PAB21436) shows strong granular cytoplasmic positivity in glandular cells.

## Gene Info — SGSM2

**Entrez GeneID**[9905](#)**Protein Accession#**[O43147](#)**Gene Name**

SGSM2

**Gene Alias**

KIAA0397, RUTBC1

**Gene Description**

small G protein signaling modulator 2

**Omim ID**[611418](#)**Gene Ontology**[Hyperlink](#)**Other Designations**

RUN and TBC1 domain containing 1|small G protein signaling modulator 2 protein