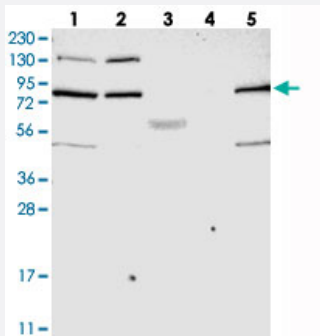


SMCR8 polyclonal antibody

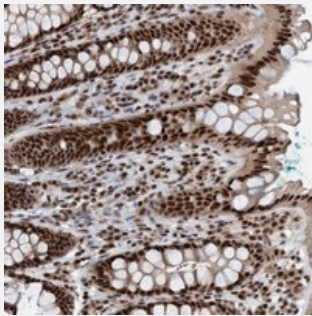
Catalog # PAB21429 Size 100 uL

Applications



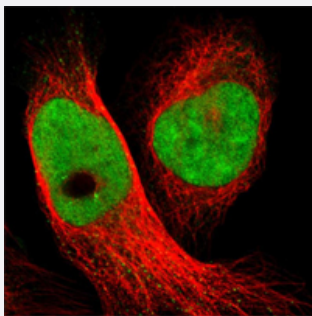
Western Blot

Western blot analysis of Lane 1: RT-4, Lane 2: U-251 MG, Lane 3: Human Plasma, Lane 4: Liver, Lane 5: Tonsil with SMCR8 polyclonal antibody (Cat # PAB21429) at 1:250-1:500 dilution.



Immunohistochemistry (Formalin/PFA-fixed paraffin-embedded sections)

Immunohistochemical staining of human rectum with SMCR8 polyclonal antibody (Cat # PAB21429) shows strong nuclear positivity in glandular cells at 1:50-1:200 dilution.



Immunofluorescence

Immunofluorescent staining of human cell line U-2 OS shows positivity in nuclei but not nucleoli. Using SMCR8 polyclonal antibody (Cat # PAB21429).

Specification

Product Description

Rabbit polyclonal antibody raised against recombinant SMCR8.

Immunogen

Recombinant protein corresponding to amino acids of human SMCR8.

Sequence	SQASTTSNPDESADTDLYTCRPAYTPKLIKAKSTKCFDKKLKTEELCDTEYFTQTLAQLSHIEHMF RGDLCYLLTSQIDRALLKQQHITNFLFEDFVEVDDRMVEKQESIPSKPSQD
Host	Rabbit
Reactivity	Human
Form	Liquid
Purification	Antigen affinity purification
Isotype	IgG
Recommend Usage	Immunohistochemistry (1:50-1:200) Western Blot (1:250-1:500) The optimal working dilution should be determined by the end user.
Storage Buffer	In PBS, pH 7.2 (40% glycerol, 0.02% sodium azide)
Storage Instruction	Store at 4°C. For long term storage store at -20°C. Aliquot to avoid repeated freezing and thawing.
Note	This product contains sodium azide: a POISONOUS AND HAZARDOUS SUBSTANCE which should be handled by trained staff only.

Applications

- Western Blot

Western blot analysis of Lane 1: RT-4, Lane 2: U-251 MG, Lane 3: Human Plasma, Lane 4: Liver, Lane 5: Tonsil with SMCR8 polyclonal antibody (Cat # PAB21429) at 1:250-1:500 dilution.

- Immunohistochemistry (Formalin/PFA-fixed paraffin-embedded sections)

Immunohistochemical staining of human rectum with SMCR8 polyclonal antibody (Cat # PAB21429) shows strong nuclear positivity in glandular cells at 1:50-1:200 dilution.

- Immunofluorescence

Immunofluorescent staining of human cell line U-2 OS shows positivity in nuclei but not nucleoli.
Using SMCR8 polyclonal antibody (Cat # PAB21429).

Gene Info — SMCR8

Entrez GeneID [140775](#)

Protein Accession# [Q8TEV9](#)

Gene Name	SMCR8
Gene Alias	FLJ34716, FLJ60657
Gene Description	Smith-Magenis syndrome chromosome region, candidate 8
Gene Ontology	Hyperlink
Gene Summary	This gene encodes a protein of unknown function. It is located in the Smith-Magenis syndrome region on chromosome 17.
Other Designations	OTTHUMP00000065699