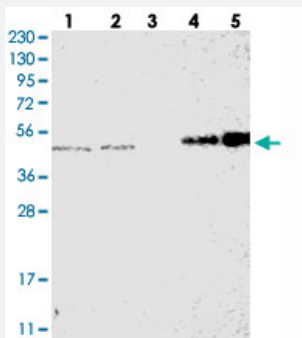


SMAP2 polyclonal antibody

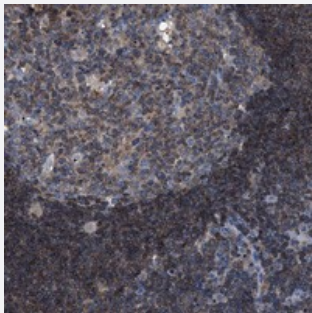
Catalog # PAB21413 Size 100 uL

Applications



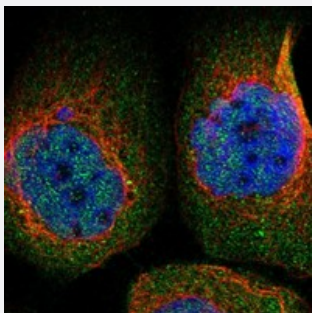
Western Blot

Western blot analysis of Lane 1: RT-4, Lane 2: U-251 MG, Lane 3: Human Plasma, Lane 4: Liver, Lane 5: Tonsil with SMAP2 polyclonal antibody (Cat # PAB21413) at 1:250-1:500 dilution.



Immunohistochemistry (Formalin/PFA-fixed paraffin-embedded sections)

Immunohistochemical staining of human lymph node with SMAP2 polyclonal antibody (Cat # PAB21413) shows strong positivity in cells outside the germinal center at 1:200-1:500 dilution.



Immunofluorescence

Immunofluorescent staining of human cell line A-431 with SMAP2 polyclonal antibody (Cat # PAB21413) at 1-4 ug/mL dilution shows positivity in nucleus but not nucleoli and cytoplasm.

Specification

Product Description

Rabbit polyclonal antibody raised against recombinant SMAP2.

Immunogen

Recombinant protein corresponding to amino acids of human SMAP2.

Sequence	ASGMVAPMAMPAGYMGGMQASMMGVPNGMMTTQQAGYMAGMAAMPQTVYGVQPAQQLQWN LTQMTQQMAGMNFYGANGMMNYGQSMSSGGNGQAANQTLSPQMWK
Host	Rabbit
Reactivity	Human
Form	Liquid
Purification	Antigen affinity purification
Isotype	IgG
Recommend Usage	Immunohistochemistry (1:200-1:500) Western Blot (1:250-1:500) Immunofluorescence (1-4 ug/mL) The optimal working dilution should be determined by the end user.
Storage Buffer	In PBS, pH 7.2 (40% glycerol, 0.02% sodium azide)
Storage Instruction	Store at 4°C. For long term storage store at -20°C. Aliquot to avoid repeated freezing and thawing.
Note	This product contains sodium azide: a POISONOUS AND HAZARDOUS SUBSTANCE which should be handled by trained staff only.

Applications

- Western Blot

Western blot analysis of Lane 1: RT-4, Lane 2: U-251 MG, Lane 3: Human Plasma, Lane 4: Liver, Lane 5: Tonsil with SMAP2 polyclonal antibody (Cat # PAB21413) at 1:250-1:500 dilution.

- Immunohistochemistry (Formalin/PFA-fixed paraffin-embedded sections)

Immunohistochemical staining of human lymph node with SMAP2 polyclonal antibody (Cat # PAB21413) shows strong positivity in cells outside the germinal center at 1:200-1:500 dilution.

- Immunofluorescence

Immunofluorescent staining of human cell line A-431 with SMAP2 polyclonal antibody (Cat # PAB21413) at 1-4 ug/mL dilution shows positivity in nucleus but not nucleoli and cytoplasm.

Gene Info — SMAP2

Entrez GeneID [64744](#)

Protein Accession# [Q8WU79](#)

Gene Name	SMAP2
Gene Alias	RP1-228H13.3, SMAP1L
Gene Description	small ArfGAP2
Gene Ontology	Hyperlink
Other Designations	OTTHUMP00000008376 stromal membrane-associated GTPase-activating protein 2 stromal membrane-associated protein 1-like

Pathway

- [Endocytosis](#)

Disease

- [Asthma](#)
- [Genetic Predisposition to Disease](#)