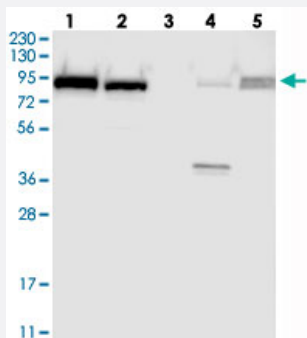


FAM129B polyclonal antibody

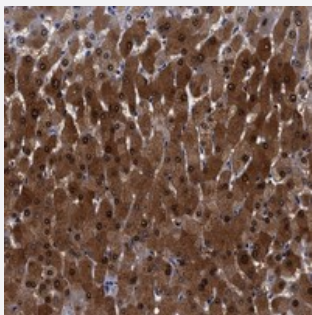
Catalog # PAB21405 Size 100 uL

Applications



Western Blot

Western blot analysis of Lane 1: RT-4, Lane 2: U-251 MG, Lane 3: Human Plasma, Lane 4: Liver, Lane 5: Tonsil with FAM129B polyclonal antibody (Cat # PAB21405) at 1:250-1:500 dilution.



Immunohistochemistry (Formalin/PFA-fixed paraffin-embedded sections)

Immunohistochemical staining of human liver with FAM129B polyclonal antibody (Cat # PAB21405) shows strong cytoplasmic and nuclear positivity in hepatocytes at 1:500-1:1000 dilution.

Specification

Product Description	Rabbit polyclonal antibody raised against recombinant FAM129B.
Immunogen	Recombinant protein corresponding to amino acids of human FAM129B.
Sequence	LIGNSLPGTTAKSGSAPILKCPTQFPLILWHPYARHYFMMTEAEQDKWQAVLQDCIRHCNNGIP EDSKVEGPAFTDAIRMYRQSKELYGTWEMLCGNE
Host	Rabbit
Reactivity	Human
Form	Liquid

Purification	Antigen affinity purification
Isotype	IgG
Recommend Usage	Immunohistochemistry (1:500-1:1000) Western Blot (1:250-1:500) The optimal working dilution should be determined by the end user.
Storage Buffer	In PBS, pH 7.2 (40% glycerol, 0.02% sodium azide)
Storage Instruction	Store at 4°C. For long term storage store at -20°C. Aliquot to avoid repeated freezing and thawing.
Note	This product contains sodium azide: a POISONOUS AND HAZARDOUS SUBSTANCE which should be handled by trained staff only.

Applications

- Western Blot

Western blot analysis of Lane 1: RT-4, Lane 2: U-251 MG, Lane 3: Human Plasma, Lane 4: Liver, Lane 5: Tonsil with FAM129B polyclonal antibody (Cat # PAB21405) at 1:250-1:500 dilution.

- Immunohistochemistry (Formalin/PFA-fixed paraffin-embedded sections)

Immunohistochemical staining of human liver with FAM129B polyclonal antibody (Cat # PAB21405) shows strong cytoplasmic and nuclear positivity in hepatocytes at 1:500-1:1000 dilution.

Gene Info — FAM129B

Entrez GeneID	64855
Protein Accession#	Q96TA1
Gene Name	FAM129B
Gene Alias	C9orf88, DKFZP434H0820, FLJ13518, FLJ22151, FLJ22298, MEG-3, OC58, bA356B19.6
Gene Description	family with sequence similarity 129, member B
Gene Ontology	Hyperlink
Gene Summary	O
Other Designations	Niban-like protein OTTHUMP00000022187 OTTHUMP00000022188 hypothetical protein LOC64855