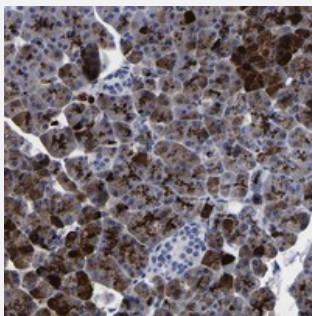


IER5L polyclonal antibody

Catalog # PAB21392 Size 100 uL

Applications



Immunohistochemistry (Formalin/PFA-fixed paraffin-embedded sections)

Immunohistochemical staining of human pancreas with IER5L polyclonal antibody (Cat # PAB21392) shows strong cytoplasmic positivity in exocrine cells.

Specification

Product Description	Rabbit polyclonal antibody raised against recombinant IER5L.
Immunogen	Recombinant protein corresponding to amino acids of human IER5L.
Sequence	PSDFGLHCSSQTTVLDLDTHTVTTVENGYLHQDCCASAHCPCCGQGAPGPGLASAAGCKRKYY PGQEEEEEDDEEDAG
Host	Rabbit
Reactivity	Human
Form	Liquid
Purification	Antigen affinity purification
Isotype	IgG
Recommend Usage	Immunohistochemistry (1:50-1:200) The optimal working dilution should be determined by the end user.
Storage Buffer	In PBS, pH 7.2 (40% glycerol, 0.02% sodium azide)

Storage Instruction

Store at 4°C. For long term storage store at -20°C.
Aliquot to avoid repeated freezing and thawing.

Note

This product contains sodium azide: a POISONOUS AND HAZARDOUS SUBSTANCE which should be handled by trained staff only.

Applications

- Immunohistochemistry (Formalin/PFA-fixed paraffin-embedded sections)

Immunohistochemical staining of human pancreas with IER5L polyclonal antibody (Cat # PAB21392) shows strong cytoplasmic positivity in exocrine cells.

Gene Info — IER5L

Entrez GeneID[389792](#)**Protein Accession#**[Q5T953](#)**Gene Name**

IER5L

Gene Alias

MGC70833, bA247A12.2

Gene Description

immediate early response 5-like

Gene Ontology[Hyperlink](#)**Other Designations**

OTTHUMP00000022330