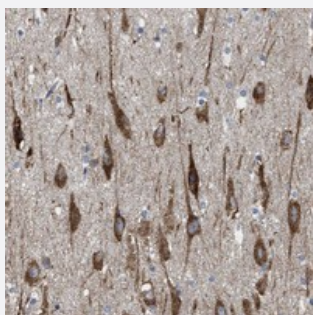


WDR60 polyclonal antibody

Catalog # PAB21387 Size 100 uL

Applications



Immunohistochemistry (Formalin/PFA-fixed paraffin-embedded sections)

Immunohistochemical staining of human hippocampus with WDR60 polyclonal antibody (Cat # PAB21387) shows strong cytoplasmic positivity in neuronal cells at 1:20-1:50 dilution.

Specification

Product Description	Rabbit polyclonal antibody raised against recombinant WDR60.
Immunogen	Recombinant protein corresponding to amino acids of human WDR60.
Sequence	ASLDESGVLNVWVVVELPKADIAGSISDLGLMPGGRVKLVHSALIQLGDSLSHKGNEFWGTTQTL NVKFLPSDPNHFIIGTDMGLISHGTRQDLRVAPKLFKPQQHGIRPVKVN
Host	Rabbit
Reactivity	Human
Form	Liquid
Purification	Antigen affinity purification
Isotype	IgG
Recommend Usage	Immunohistochemistry (1:20-1:50) The optimal working dilution should be determined by the end user.
Storage Buffer	In PBS, pH 7.2 (40% glycerol, 0.02% sodium azide)

Storage Instruction

Store at 4°C. For long term storage store at -20°C.
Aliquot to avoid repeated freezing and thawing.

Note

This product contains sodium azide: a POISONOUS AND HAZARDOUS SUBSTANCE which should be handled by trained staff only.

Applications

- Immunohistochemistry (Formalin/PFA-fixed paraffin-embedded sections)

Immunohistochemical staining of human hippocampus with WDR60 polyclonal antibody (Cat # PAB21387) shows strong cytoplasmic positivity in neuronal cells at 1:20-1:50 dilution.

Gene Info — WDR60

Entrez GeneID[55112](#)**Protein Accession#**[Q8WVS4](#)**Gene Name**

WDR60

Gene Alias

FLJ10300, FLJ23575

Gene Description

WD repeat domain 60

Gene Ontology[Hyperlink](#)**Other Designations**

-