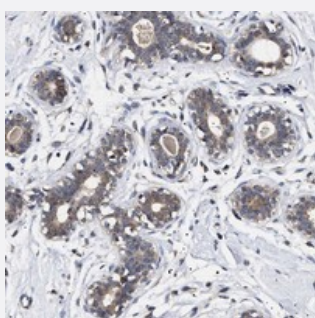


KRBA1 polyclonal antibody

Catalog # PAB21372 Size 100 uL

Applications



Immunohistochemistry (Formalin/PFA-fixed paraffin-embedded sections)

Immunohistochemical staining of human breast with KRBA1 polyclonal antibody (Cat # PAB21372) shows moderate positivity in glandular cells at 1:200-1:500 dilution.

Specification

Product Description	Rabbit polyclonal antibody raised against recombinant KRBA1.
Immunogen	Recombinant protein corresponding to amino acids of human KRBA1.
Sequence	INCLKEILVPGPRHPETSPSFLPPLPSLGTSRLTRADLGPSPWPWAVKTEAVSGDCPLQGLLHCL KELPEAQDRHPSPSGVGNRRLQENPGAWKRGSGPGYLLTPPPHPDLGAG
Host	Rabbit
Reactivity	Human
Form	Liquid
Purification	Antigen affinity purification
Isotype	IgG
Recommend Usage	Immunohistochemistry (1:200-1:500) The optimal working dilution should be determined by the end user.
Storage Buffer	In PBS, pH 7.2 (40% glycerol, 0.02% sodium azide)

Storage Instruction

Store at 4°C. For long term storage store at -20°C.
Aliquot to avoid repeated freezing and thawing.

Note

This product contains sodium azide: a POISONOUS AND HAZARDOUS SUBSTANCE which should be handled by trained staff only.

Applications

- Immunohistochemistry (Formalin/PFA-fixed paraffin-embedded sections)

Immunohistochemical staining of human breast with KRBA1 polyclonal antibody (Cat # PAB21372) shows moderate positivity in glandular cells at 1:200-1:500 dilution.

Gene Info — KRBA1

Entrez GeneID[84626](#)**Protein Accession#**[A5PL33](#)**Gene Name**

KRBA1

Gene Alias

KIAA1862, MGC176633

Gene Description

KRAB-A domain containing 1

Gene Ontology[Hyperlink](#)**Other Designations**

KRAB A domain containing 1