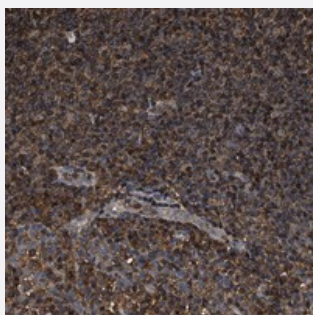


KBTBD2 polyclonal antibody

Catalog # PAB21358 Size 100 uL

Applications



Immunohistochemistry (Formalin/PFA-fixed paraffin-embedded sections)

Immunohistochemical staining of human tonsil with KBTBD2 polyclonal antibody (Cat # PAB21358) shows strong cytoplasmic positivity.

Specification

Product Description	Rabbit polyclonal antibody raised against recombinant KBTBD2.
Immunogen	Recombinant protein corresponding to amino acids of human KBTBD2.
Sequence	LNVEKEETVREAAMLWLEYNTESRSQYLSSVLSQIRIDALSEVTQRAWFQGLPPNDKSVVVQGLYKSMPKFFKPRLGMTKEEMMIFIEASSENPCSLYSSVCYSPQAEKVYKLCSPPADLHKVGTVTPDND
Host	Rabbit
Reactivity	Human
Form	Liquid
Purification	Antigen affinity purification
Isotype	IgG
Recommend Usage	Immunohistochemistry (1:200-1:500) The optimal working dilution should be determined by the end user.
Storage Buffer	In PBS, pH 7.2 (40% glycerol, 0.02% sodium azide)

Storage Instruction

Store at 4°C. For long term storage store at -20°C.
Aliquot to avoid repeated freezing and thawing.

Note

This product contains sodium azide: a POISONOUS AND HAZARDOUS SUBSTANCE which should be handled by trained staff only.

Applications

- Immunohistochemistry (Formalin/PFA-fixed paraffin-embedded sections)

Immunohistochemical staining of human tonsil with KBTBD2 polyclonal antibody (Cat # PAB21358) shows strong cytoplasmic positivity.

Gene Info — KBTBD2

Entrez GeneID[25948](#)**Protein Accession#**[Q8IY47](#)**Gene Name**

KBTBD2

Gene Alias

BKLHD1

Gene Description

kelch repeat and BTB (POZ) domain containing 2

Gene Ontology[Hyperlink](#)**Other Designations**

BTB and kelch domain containing 1