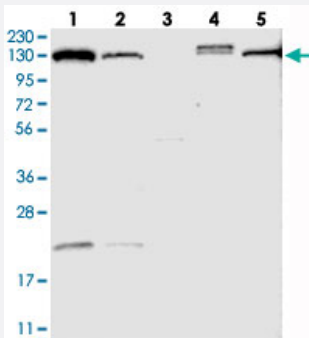


# TPP2 polyclonal antibody

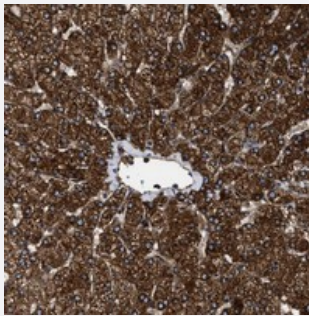
Catalog # PAB21353      Size 100 uL

## Applications



### Western Blot

Western blot analysis of Lane 1: RT-4, Lane 2: U-251 MG, Lane 3: Human Plasma, Lane 4: Liver, Lane 5: Tonsil with TPP2 polyclonal antibody (Cat # PAB21353).



### Immunohistochemistry (Formalin/PFA-fixed paraffin-embedded sections)

Immunohistochemical staining of human liver with TPP2 polyclonal antibody (Cat # PAB21353) shows strong cytoplasmic positivity in hepatocytes.

## Specification

<b>Product Description</b>	Rabbit polyclonal antibody raised against recombinant TPP2.
<b>Immunogen</b>	Recombinant protein corresponding to amino acids of human TPP2.
<b>Sequence</b>	SSQANKLIKEELQSQVELLNSFEKKYSDPGPVYDCLVWHIDGEVWRACIDSNEGDGLSKSTVLRN YKEAQEYGSFGTAEMLNYSVNIYDDGNLLSVTSGGAHGTHVASIAAGHFPEEPERNGVAPGAQIL SIKIGDTRLST
<b>Host</b>	Rabbit
<b>Reactivity</b>	Human
<b>Form</b>	Liquid

Purification	Antigen affinity purification
Isotype	IgG
Recommend Usage	Immunohistochemistry (1:50-1:200) Western Blot (1:250-1:500) The optimal working dilution should be determined by the end user.
Storage Buffer	In PBS, pH 7.2 (40% glycerol, 0.02% sodium azide)
Storage Instruction	Store at 4°C. For long term storage store at -20°C. Aliquot to avoid repeated freezing and thawing.
Note	This product contains sodium azide: a POISONOUS AND HAZARDOUS SUBSTANCE which should be handled by trained staff only.

## Applications

- Western Blot

Western blot analysis of Lane 1: RT-4, Lane 2: U-251 MG, Lane 3: Human Plasma, Lane 4: Liver, Lane 5: Tonsil with TPP2 polyclonal antibody (Cat # PAB21353).

- Immunohistochemistry (Formalin/PFA-fixed paraffin-embedded sections)

Immunohistochemical staining of human liver with TPP2 polyclonal antibody (Cat # PAB21353) shows strong cytoplasmic positivity in hepatocytes.

## Gene Info — TPP2

Entrez GeneID	<a href="#">7174</a>
Protein Accession#	<a href="#">P29144</a>
Gene Name	TPP2
Gene Alias	FLJ40359
Gene Description	tripeptidyl peptidase II
Omim ID	<a href="#">190470</a>
Gene Ontology	<a href="#">Hyperlink</a>

**Gene Summary**

This gene encodes a mammalian peptidase that, at neutral pH, removes tripeptides from the N terminus of longer peptides. The protein has a specialized function that is essential for some MHC class I antigen presentation. The protein is a high molecular mass serine exopeptidase; the amino acid sequence surrounding the serine residue at the active site is similar to the peptidases of the subtilisin class rather than the trypsin class. [provided by RefSeq]

**Other Designations**

OTTHUMP00000018664

**Disease**

- [Tobacco Use Disorder](#)