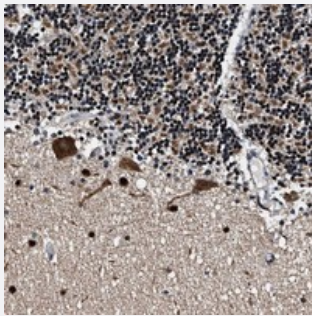


BAT2L polyclonal antibody

Catalog # PAB21349 Size 100 uL

Applications



Immunohistochemistry (Formalin/PFA-fixed paraffin-embedded sections)

Immunohistochemical staining of human cerebellum with BAT2L polyclonal antibody (Cat # PAB21349) shows strong positivity in most cells at 1:50-1:200 dilution.

Specification

Product Description	Rabbit polyclonal antibody raised against recombinant BAT2L.
Immunogen	Recombinant protein corresponding to amino acids of human BAT2L.
Sequence	EREESTLKKGDCRDSWRSNKGCSGDHSGLDKSRGPRAFGRALPPRLSNCGYGRRTFVSKES PHWQSKSPGSSWQEYGPSDTGSRPRTDRDYVPDSYRHPDAFGGR
Host	Rabbit
Reactivity	Human
Form	Liquid
Purification	Antigen affinity purification
Isotype	IgG
Recommend Usage	Immunohistochemistry (1:50-1:200) The optimal working dilution should be determined by the end user.
Storage Buffer	In PBS, pH 7.2 (40% glycerol, 0.02% sodium azide)

Storage Instruction

Store at 4°C. For long term storage store at -20°C.
Aliquot to avoid repeated freezing and thawing.

Note

This product contains sodium azide: a POISONOUS AND HAZARDOUS SUBSTANCE which should be handled by trained staff only.

Applications

- Immunohistochemistry (Formalin/PFA-fixed paraffin-embedded sections)

Immunohistochemical staining of human cerebellum with BAT2L polyclonal antibody (Cat # PAB21349) shows strong positivity in most cells at 1:50-1:200 dilution.

Gene Info — BAT2L

Entrez GeneID[84726](#)**Protein Accession#**[Q5JSZ5](#)**Gene Name**

BAT2L

Gene Alias

DKFZp781F05101, DKFZp781K12107, KIAA0515, LQFBS-1, MGC10526

Gene Description

HLA-B associated transcript 2-like

Gene Ontology[Hyperlink](#)**Other Designations**

-