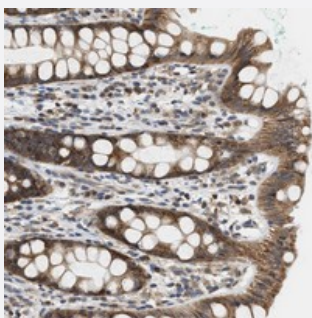


GIGYF1 polyclonal antibody

Catalog # PAB21347 Size 100 uL

Applications



Immunohistochemistry (Formalin/PFA-fixed paraffin-embedded sections)

Immunohistochemical staining of human rectum with GIGYF1 polyclonal antibody (Cat # PAB21347) shows moderate cytoplasmic positivity in glandular cells.

Specification

Product Description	Rabbit polyclonal antibody raised against recombinant GIGYF1.
Immunogen	Recombinant protein corresponding to amino acids of human GIGYF1.
Sequence	DTLEAKEFAKQFLERRAKQKASQQRQQQEAWLSSASLQTAFQANHSTKLGPGE GSKAKRRAL MLHSDPSILGYSL
Host	Rabbit
Reactivity	Human
Form	Liquid
Purification	Antigen affinity purification
Isotype	IgG
Recommend Usage	Immunohistochemistry (1:50-1:200) The optimal working dilution should be determined by the end user.
Storage Buffer	In PBS, pH 7.2 (40% glycerol, 0.02% sodium azide)

Storage Instruction

Store at 4°C. For long term storage store at -20°C.
Aliquot to avoid repeated freezing and thawing.

Note

This product contains sodium azide: a POISONOUS AND HAZARDOUS SUBSTANCE which should be handled by trained staff only.

Applications

- Immunohistochemistry (Formalin/PFA-fixed paraffin-embedded sections)

Immunohistochemical staining of human rectum with GIGYF1 polyclonal antibody (Cat # PAB21347) shows moderate cytoplasmic positivity in glandular cells.

Gene Info — GIGYF1

Entrez GeneID[64599](#)**Protein Accession#**[O75420](#)**Gene Name**

GIGYF1

Gene Alias

GYF1, PERQ1

Gene Description

GRB10 interacting GYF protein 1

Gene Ontology[Hyperlink](#)**Gene Summary**

with GYF domain 1|postmeiotic segregation increased 2-like 12

Other Designations

GYF domain containing 1|PERQ amino acid rich, with GYF domain 1|postmeiotic segregation increased 2-like 12