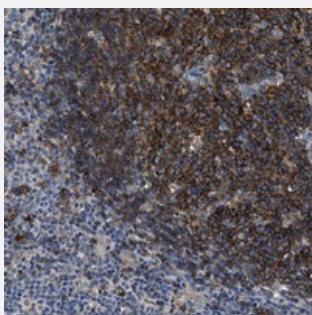


C2orf66 polyclonal antibody

Catalog # PAB21332 Size 100 uL

Applications



Immunohistochemistry (Formalin/PFA-fixed paraffin-embedded sections)

Immunohistochemical staining of human lymph node with C2orf66 polyclonal antibody (Cat # PAB21332) shows strong cytoplasmic positivity in reaction center cells at 1:20-1:50 dilution.

Specification

Product Description	Rabbit polyclonal antibody raised against recombinant C2orf66.
Immunogen	Recombinant protein corresponding to amino acids of human C2orf66.
Sequence	TVRNEDKWKPLNNPRNRDLFFRRLQAYFKGRGLDLGTFPNPFPTNENPRPLSFQSELTASASAD YEEQKNSFHNYLKG
Host	Rabbit
Reactivity	Human
Form	Liquid
Purification	Antigen affinity purification
Isotype	IgG
Recommend Usage	Immunohistochemistry (1:20-1:50) The optimal working dilution should be determined by the end user.
Storage Buffer	In PBS, pH 7.2 (40% glycerol, 0.02% sodium azide)

Storage Instruction

Store at 4°C. For long term storage store at -20°C.
Aliquot to avoid repeated freezing and thawing.

Note

This product contains sodium azide: a POISONOUS AND HAZARDOUS SUBSTANCE which should be handled by trained staff only.

Applications

- Immunohistochemistry (Formalin/PFA-fixed paraffin-embedded sections)

Immunohistochemical staining of human lymph node with C2orf66 polyclonal antibody (Cat # PAB21332) shows strong cytoplasmic positivity in reaction center cells at 1:20-1:50 dilution.

Gene Info — C2orf66

Entrez GeneID[401027](#)**Protein Accession#**[Q6UXQ4](#)**Gene Name**

C2orf66

Gene Alias

UNQ6411

Gene Description

chromosome 2 open reading frame 66

Gene Ontology[Hyperlink](#)**Other Designations**

IIDS6411|hypothetical protein LOC401027