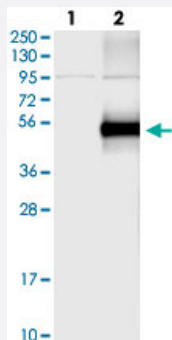


# GFRA3 polyclonal antibody

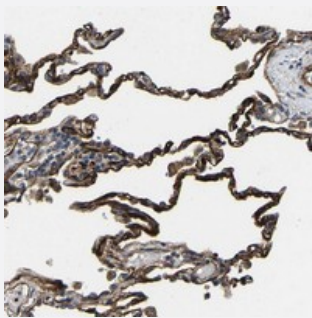
Catalog # PAB21328      Size 100 uL

## Applications



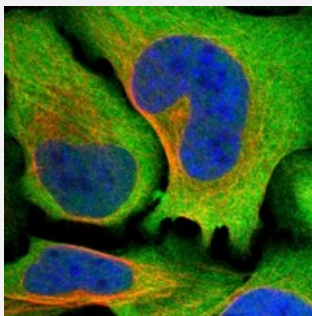
### Western Blot (Transfected lysate)

Western blot analysis of Lane 1: Negative control (vector only transfected HEK293T lysate), Lane 2: Over-expression Lysate (Co-expressed with a C-terminal myc-DDK tag (~3.1 kDa) in mammalian HEK293T cells) with GFRA3 polyclonal antibody (Cat # PAB21328) at 1:250-1:500 dilution.



### Immunohistochemistry (Formalin/PFA-fixed paraffin-embedded sections)

Immunohistochemical staining of human lung with GFRA3 polyclonal antibody (Cat # PAB21328) shows strong positivity in alveolar cells at 1:500-1:1000 dilution.



### Immunofluorescence

Immunofluorescent staining of human cell line U-2 OS with GFRA3 polyclonal antibody (Cat # PAB21328) at 1-4 ug/mL dilution shows positivity in plasma membrane and cytoplasm.

## Specification

### Product Description

Rabbit polyclonal antibody raised against recombinant GFRA3.

### Immunogen

Recombinant protein corresponding to amino acids of human GFRA3.

Sequence	LPTESRLMNSCLQARRKCQADPTCSAAYHHLDSTSSISTPLPSEEPSVPADCLEAAQQLRNSS LIGCMCHRRMKNQVACL
Host	Rabbit
Reactivity	Human
Form	Liquid
Purification	Antigen affinity purification
Isotype	IgG
Recommend Usage	Immunohistochemistry (1:500-1:1000) Western Blot (1:250-1:500) Immunofluorescence (1-4 ug/mL) The optimal working dilution should be determined by the end user.
Storage Buffer	In PBS, pH 7.2 (40% glycerol, 0.02% sodium azide)
Storage Instruction	Store at 4°C. For long term storage store at -20°C. Aliquot to avoid repeated freezing and thawing.
Note	This product contains sodium azide: a POISONOUS AND HAZARDOUS SUBSTANCE which should be handled by trained staff only.

## Applications

- Western Blot (Transfected lysate)

Western blot analysis of Lane 1: Negative control (vector only transfected HEK293T lysate), Lane 2: Over-expression Lysate (Co-expressed with a C-terminal myc-DDK tag (~3.1 kDa) in mammalian HEK293T cells) with GFRA3 polyclonal antibody (Cat # PAB21328) at 1:250-1:500 dilution.

- Immunohistochemistry (Formalin/PFA-fixed paraffin-embedded sections)

Immunohistochemical staining of human lung with GFRA3 polyclonal antibody (Cat # PAB21328) shows strong positivity in alveolar cells at 1:500-1:1000 dilution.

- Immunofluorescence

Immunofluorescent staining of human cell line U-2 OS with GFRA3 polyclonal antibody (Cat # PAB21328) at 1-4 ug/mL dilution shows positivity in plasma membrane and cytoplasm.

## Gene Info — GFRA3

Entrez GeneID [2676](#)

Protein Accession#	<a href="#">O60609</a>
Gene Name	GFRA3
Gene Alias	-
Gene Description	GDNF family receptor alpha 3
Omim ID	<a href="#">605710</a>
Gene Ontology	<a href="#">Hyperlink</a>
Gene Summary	The protein encoded by this gene is a glycosylphosphatidylinositol(GPI)-linked cell surface receptor and a member of the GDNF receptor family. It forms a signaling receptor complex with RET tyrosine kinase receptor and binds the ligand, artemin. [provided by RefSeq]
Other Designations	GPI-linked receptor glial cell line-derived neurotrophic factor receptor alpha-3

## Disease

- [Carcinoma](#)
- [Hirschsprung Disease](#)
- [Schizophrenia](#)
- [Thyroid Neoplasms](#)