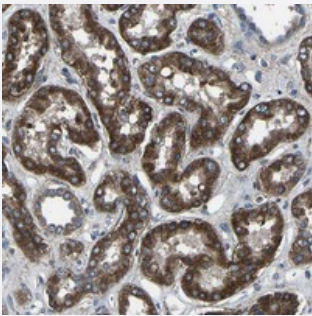


KIAA1958 polyclonal antibody

Catalog # PAB21317 Size 100 uL

Applications



Immunohistochemistry (Formalin/PFA-fixed paraffin-embedded sections)

Immunohistochemical staining of human kidney with KIAA1958 polyclonal antibody (Cat # PAB21317) shows strong cytoplasmic positivity tubular cells.

Specification

Product Description	Rabbit polyclonal antibody raised against recombinant KIAA1958.
Immunogen	Recombinant protein corresponding to amino acids of human KIAA1958.
Sequence	LIPNLKHLLESGSHGNLTAMWGCSAGHAYHWPLTATCRAGSQERVCFQDNRSFNSDSPSIIGVPS ETQTSPVERYPGRPVKAKLDCNRTDSCDFSVCSEP
Host	Rabbit
Reactivity	Human
Form	Liquid
Purification	Antigen affinity purification
Isotype	IgG
Recommend Usage	Immunohistochemistry (1:50-1:200) The optimal working dilution should be determined by the end user.
Storage Buffer	In PBS, pH 7.2 (40% glycerol, 0.02% sodium azide)

Storage Instruction

Store at 4°C. For long term storage store at -20°C.
Aliquot to avoid repeated freezing and thawing.

Note

This product contains sodium azide: a POISONOUS AND HAZARDOUS SUBSTANCE which should be handled by trained staff only.

Applications

- Immunohistochemistry (Formalin/PFA-fixed paraffin-embedded sections)

Immunohistochemical staining of human kidney with KIAA1958 polyclonal antibody (Cat # PAB21317) shows strong cytoplasmic positivity tubular cells.

Gene Info — KIAA1958

Entrez GeneID [158405](#)

Protein Accession# [Q8N8K9](#)

Gene Name KIAA1958

Gene Alias FLJ39294, MGC142075

Gene Description KIAA1958

Gene Ontology [Hyperlink](#)

Other Designations OTTHUMP00000021938|hypothetical protein LOC158405

Disease

- [Tobacco Use Disorder](#)