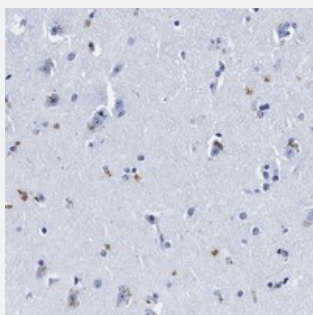


LRRC8E polyclonal antibody

Catalog # PAB21305 Size 100 uL

Applications



Immunohistochemistry (Formalin/PFA-fixed paraffin-embedded sections)

Immunohistochemical staining of human cerebral cortex with LRRC8E polyclonal antibody (Cat # PAB21305) shows distinct positivity in neurons at 1:10-1:20 dilution.

Specification

Product Description	Rabbit polyclonal antibody raised against recombinant LRRC8E.
Immunogen	Recombinant protein corresponding to amino acids of human LRRC8E.
Sequence	KLRQKLQRNAAGRLELALCMLPGLPDTVFELSEVESLRLEAICDITFPPGLSQLVHLQELSLHSP ARLPFSLQVFLRDHLKVMRVKCEELREVPLWVFGLRGLEELHLEGLFPQELARAATL
Host	Rabbit
Reactivity	Human
Form	Liquid
Purification	Antigen affinity purification
Isotype	IgG
Recommend Usage	Immunohistochemistry (1:10-1:20) The optimal working dilution should be determined by the end user.
Storage Buffer	In PBS, pH 7.2 (40% glycerol, 0.02% sodium azide)

Storage Instruction

Store at 4°C. For long term storage store at -20°C.
Aliquot to avoid repeated freezing and thawing.

Note

This product contains sodium azide: a POISONOUS AND HAZARDOUS SUBSTANCE which should be handled by trained staff only.

Applications

- Immunohistochemistry (Formalin/PFA-fixed paraffin-embedded sections)

Immunohistochemical staining of human cerebral cortex with LRRC8E polyclonal antibody (Cat # PAB21305) shows distinct positivity in neurons at 1:10-1:20 dilution.

Gene Info — LRRC8E

Entrez GeneID[80131](#)**Protein Accession#**[Q6NSJ5](#)**Gene Name**

LRRC8E

Gene Alias

FLJ23420

Gene Description

leucine rich repeat containing 8 family, member E

Gene Ontology[Hyperlink](#)**Gene Summary**

O

Other Designations

-