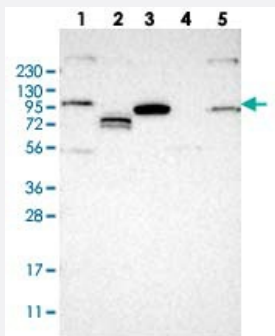


RSBN1L polyclonal antibody

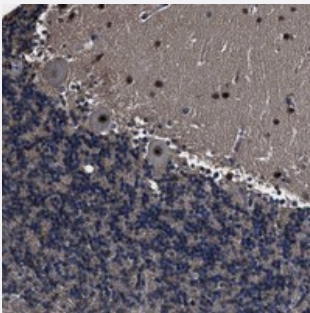
Catalog # PAB21294 Size 100 uL

Applications



Western Blot

Western blot analysis of Lane 1: RT-4, Lane 2: U-251 MG, Lane 3: Human Plasma, Lane 4: Liver, Lane 5: Tonsil with RSBN1L polyclonal antibody (Cat # PAB21294) at 1:250-1:500 dilution.



Immunohistochemistry (Formalin/PFA-fixed paraffin-embedded sections)

Immunohistochemical staining of human cerebellum with RSBN1L polyclonal antibody (Cat # PAB21294) shows strong nuclear positivity in purkinje cells at 1:50-1:200 dilution.

Specification

Product Description	Rabbit polyclonal antibody raised against recombinant RSBN1L.
Immunogen	Recombinant protein corresponding to amino acids of human RSBN1L.
Sequence	NTATHETGTSSDSTSSVLGPHTDNMICA VSKASLDSVFS DKLH SKYELQQIKHEPIASVRIKEE PV NVNIPEKTTALNNMDGKNV KAKLDHVQFAEFKIDMDSKFENS NKDLKEELCPGNLSLVDTR
Host	Rabbit
Reactivity	Human
Form	Liquid

Purification	Antigen affinity purification
Isotype	IgG
Recommend Usage	Immunohistochemistry (1:50-1:200) Western Blot (1:250-1:500) The optimal working dilution should be determined by the end user.
Storage Buffer	In PBS, pH 7.2 (40% glycerol, 0.02% sodium azide)
Storage Instruction	Store at 4°C. For long term storage store at -20°C. Aliquot to avoid repeated freezing and thawing.
Note	This product contains sodium azide: a POISONOUS AND HAZARDOUS SUBSTANCE which should be handled by trained staff only.

Applications

- Western Blot

Western blot analysis of Lane 1: RT-4, Lane 2: U-251 MG, Lane 3: Human Plasma, Lane 4: Liver, Lane 5: Tonsil with RSBN1L polyclonal antibody (Cat # PAB21294) at 1:250-1:500 dilution.

- Immunohistochemistry (Formalin/PFA-fixed paraffin-embedded sections)

Immunohistochemical staining of human cerebellum with RSBN1L polyclonal antibody (Cat # PAB21294) shows strong nuclear positivity in purkinje cells at 1:50-1:200 dilution.

Gene Info — RSBN1L

Entrez GeneID	222194
Protein Accession#	Q6PCB5
Gene Name	RSBN1L
Gene Alias	FLJ42526, FLJ45813, MGC71764
Gene Description	round spermatid basic protein 1-like
Gene Ontology	Hyperlink
Other Designations	-