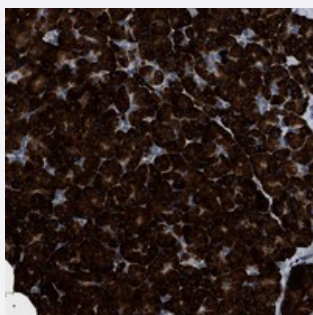


ZC3HAV1L polyclonal antibody

Catalog # PAB21290 Size 100 uL

Applications



Immunohistochemistry (Formalin/PFA-fixed paraffin-embedded sections)

Immunohistochemical staining of human pancreas with ZC3HAV1L polyclonal antibody (Cat # PAB21290) shows strong cytoplasmic positivity in exocrine glandular cells.

Specification

Product Description	Rabbit polyclonal antibody raised against recombinant ZC3HAV1L.
Immunogen	Recombinant protein corresponding to amino acids of human ZC3HAV1L.
Sequence	CKRSHQLIHAASLKLLQDQGLNIPSVVNFQIISTYKHMKLHKMLENTDNSSPSTEHSQGLEKQGVH AAGAAEAGPLASVPAQSAKKPCPV
Host	Rabbit
Reactivity	Human
Form	Liquid
Purification	Antigen affinity purification
Isotype	IgG
Recommend Usage	Immunohistochemistry (1:200-1:500) The optimal working dilution should be determined by the end user.
Storage Buffer	In PBS, pH 7.2 (40% glycerol, 0.02% sodium azide)

Storage Instruction

Store at 4°C. For long term storage store at -20°C.
Aliquot to avoid repeated freezing and thawing.

Note

This product contains sodium azide: a POISONOUS AND HAZARDOUS SUBSTANCE which should be handled by trained staff only.

Applications

- Immunohistochemistry (Formalin/PFA-fixed paraffin-embedded sections)

Immunohistochemical staining of human pancreas with ZC3HAV1L polyclonal antibody (Cat # PAB21290) shows strong cytoplasmic positivity in exocrine glandular cells.

Gene Info — ZC3HAV1L

Entrez GeneID[92092](#)**Protein Accession#**[Q96H79](#)**Gene Name**

ZC3HAV1L

Gene Alias

C7orf39, MGC14289

Gene Description

zinc finger CCCH-type, antiviral 1-like

Gene Ontology[Hyperlink](#)**Gene Summary**

O

Other Designations

-