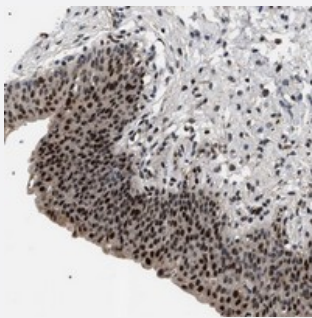


C7orf25 polyclonal antibody

Catalog # PAB21276 Size 100 uL

Applications



Immunohistochemistry (Formalin/PFA-fixed paraffin-embedded sections)

Immunohistochemical staining of human urinary bladder with C7orf25 polyclonal antibody (Cat # PAB21276) shows strong nuclear positivity in urothelial cells.

Specification

Product Description	Rabbit polyclonal antibody raised against recombinant C7orf25.
Immunogen	Recombinant protein corresponding to amino acids of human C7orf25.
Sequence	GPGERERATVLIKRVVPDQPSEALRLVASSKINSRSLTIFGTGDTLKAITMTANSQFVRAANNQ GVKFSVFIHQPRALTESKEALATPLPKDYTTD
Host	Rabbit
Reactivity	Human
Form	Liquid
Purification	Antigen affinity purification
Isotype	IgG
Recommend Usage	Immunohistochemistry (1:200-1:500) The optimal working dilution should be determined by the end user.
Storage Buffer	In PBS, pH 7.2 (40% glycerol, 0.02% sodium azide)

Storage Instruction

Store at 4°C. For long term storage store at -20°C.
Aliquot to avoid repeated freezing and thawing.

Note

This product contains sodium azide: a POISONOUS AND HAZARDOUS SUBSTANCE which should be handled by trained staff only.

Applications

- Immunohistochemistry (Formalin/PFA-fixed paraffin-embedded sections)

Immunohistochemical staining of human urinary bladder with C7orf25 polyclonal antibody (Cat # PAB21276) shows strong nuclear positivity in urothelial cells.

Gene Info — C7orf25

Entrez GeneID[79020](#)**Protein Accession#**[Q9BPX7](#)**Gene Name**

C7orf25

Gene Alias

FLJ21167, MGC2821

Gene Description

chromosome 7 open reading frame 25

Gene Ontology[Hyperlink](#)**Other Designations**

hypothetical protein LOC79020