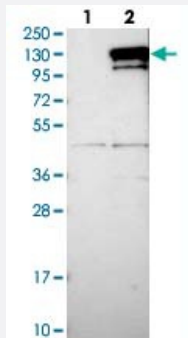


CCDC146 polyclonal antibody

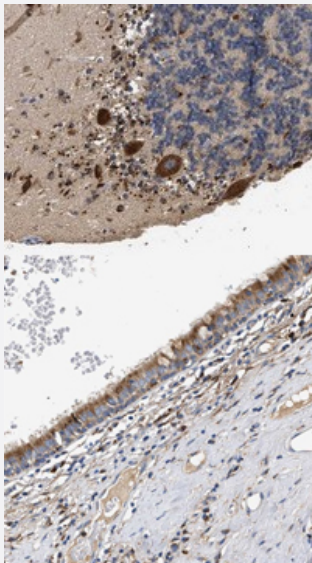
Catalog # PAB21273 Size 100 uL

Applications



Western Blot (Transfected lysate)

Western blot analysis of Lane 1: Negative control (vector only transfected HEK293T lysate), Lane 2: Over-expression Lysate (Co-expressed with a C-terminal myc-DDK tag (~3.1 kDa) in mammalian HEK293T cells) with CCDC146 polyclonal antibody (Cat # PAB21273) at 1:250-1:500 dilution.



Immunohistochemistry (Formalin/PFA-fixed paraffin-embedded sections)

Immunohistochemical staining of human bronchus with CCDC146 polyclonal antibody (Cat # PAB21273) shows moderate cytoplasmic positivity in respiratory epithelial cells at 1:50-1:200 dilution.

Specification

Product Description

Rabbit polyclonal antibody raised against recombinant CCDC146.

Immunogen

Recombinant protein corresponding to amino acids of human CCDC146.

Sequence

KLLPAKRSLDADLAVLQIQFSQCTDRIKDLEKQFVKPDGENRARFLPGKDLTEKEMIQKLDKLELQ
LAKKEEKLLKDFIYEQVSRLTDRLCSKTQGCKQDTHLLAKKMNGYQRRIK

Host	Rabbit
Reactivity	Human
Form	Liquid
Purification	Antigen affinity purification
Isotype	IgG
Recommend Usage	Immunohistochemistry (1:50-1:200) Western Blot (1:250-1:500) The optimal working dilution should be determined by the end user.
Storage Buffer	In PBS, pH 7.2 (40% glycerol, 0.02% sodium azide)
Storage Instruction	Store at 4°C. For long term storage store at -20°C. Aliquot to avoid repeated freezing and thawing.
Note	This product contains sodium azide: a POISONOUS AND HAZARDOUS SUBSTANCE which should be handled by trained staff only.

Applications

- Western Blot (Transfected lysate)

Western blot analysis of Lane 1: Negative control (vector only transfected HEK293T lysate), Lane 2: Over-expression Lysate (Co-expressed with a C-terminal myc-DDK tag (~3.1 kDa) in mammalian HEK293T cells) with CCDC146 polyclonal antibody (Cat # PAB21273) at 1:250-1:500 dilution.

- Immunohistochemistry (Formalin/PFA-fixed paraffin-embedded sections)

Immunohistochemical staining of human bronchus with CCDC146 polyclonal antibody (Cat # PAB21273) shows moderate cytoplasmic positivity in respiratory epithelial cells at 1:50-1:200 dilution.

Gene Info — CCDC146

Entrez GeneID	57639
Protein Accession#	Q8IYE0
Gene Name	CCDC146
Gene Alias	KIAA1505
Gene Description	coiled-coil domain containing 146
Gene Ontology	Hyperlink

Other Designations

-

Disease

- [Tobacco Use Disorder](#)