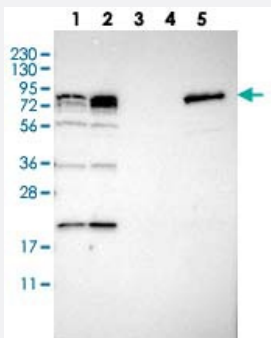


PNPLA8 polyclonal antibody

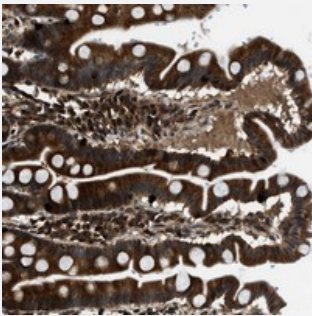
Catalog # PAB21270 Size 100 uL

Applications



Western Blot

Western blot analysis of Lane 1: RT-4, Lane 2: U-251 MG, Lane 3: Human Plasma, Lane 4: Liver, Lane 5: Tonsil with PNPLA8 polyclonal antibody (Cat # PAB21270) at 1:250-1:500 dilution.



Immunohistochemistry (Formalin/PFA-fixed paraffin-embedded sections)

Immunohistochemical staining of human duodenum with PNPLA8 polyclonal antibody (Cat # PAB21270) strong cytoplasmic positivity in glandular cells.

Specification

Product Description	Rabbit polyclonal antibody raised against recombinant PNPLA8.
Immunogen	Recombinant protein corresponding to amino acids of human PNPLA8.
Sequence	DSGWLKQKNKQAIKSLKKYSDKSAEKSPFPPEEKSHIIDKEEDIGKRSLFHYTSSITTKFGDSFYFLS NHINSYFKRKEKMSQQKENE
Host	Rabbit
Reactivity	Human
Form	Liquid

Purification	Antigen affinity purification
Isotype	IgG
Recommend Usage	Western Blot (1:250-1:500) The optimal working dilution should be determined by the end user.
Storage Buffer	In PBS, pH 7.2 (40% glycerol, 0.02% sodium azide)
Storage Instruction	Store at 4°C. For long term storage store at -20°C. Aliquot to avoid repeated freezing and thawing.
Note	This product contains sodium azide: a POISONOUS AND HAZARDOUS SUBSTANCE which should be handled by trained staff only.

Applications

- Western Blot

Western blot analysis of Lane 1: RT-4, Lane 2: U-251 MG, Lane 3: Human Plasma, Lane 4: Liver, Lane 5: Tonsil with PNPLA8 polyclonal antibody (Cat # PAB21270) at 1:250-1:500 dilution.

- Immunohistochemistry (Formalin/PFA-fixed paraffin-embedded sections)

Immunohistochemical staining of human duodenum with PNPLA8 polyclonal antibody (Cat # PAB21270) strong cytoplasmic positivity in glandular cells.

Gene Info — PNPLA8

Entrez GeneID	50640
Protein Accession#	Q9NP80
Gene Name	PNPLA8
Gene Alias	IPLA2(GAMMA), IPLA2-2, IPLA2G
Gene Description	patatin-like phospholipase domain containing 8
Gene Ontology	Hyperlink
Gene Summary	Phospholipase A2 catalyzes cleavage of fatty acids from phospholipids, thereby regulating membrane physical properties and the release of lipid second messengers and growth factors. Phospholipase A2 activity also modulates cellular growth programs, inflammation, and ion channel function (Mancuso et al., 2000 [PubMed 10744668]).[supplied by OMIM]
Other Designations	iPLA2 gamma intracellular membrane-associated calcium-independent phospholipase A2 gamma membrane-associated calcium-independent phospholipase A2 gamma

Disease

- [Genetic Predisposition to Disease](#)
- [Schizophrenia](#)
- [Tobacco Use Disorder](#)