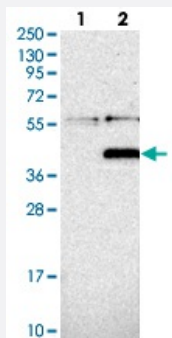


PPM1L polyclonal antibody

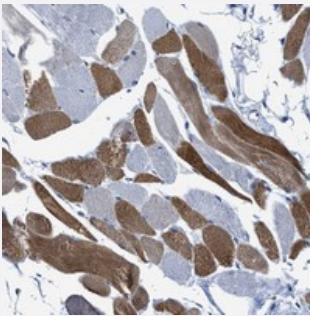
Catalog # PAB21258 Size 100 uL

Applications



Western Blot (Transfected lysate)

Western blot analysis of Lane 1: Negative control (vector only transfected HEK293T lysate), Lane 2: Over-expression Lysate (Co-expressed with a C-terminal myc-DDK tag (~3.1 kDa) in mammalian HEK293T cells) with PPM1L polyclonal antibody (Cat # PAB21258) at 1:250-1:500 dilution.



Immunohistochemistry (Formalin/PFA-fixed paraffin-embedded sections)

Immunohistochemical staining of human skeletal muscle with PPM1L polyclonal antibody (Cat # PAB21258) shows heterogeneous cytoplasmic positivity in myocytes at 1:20-1:50 dilution.

Specification

Product Description	Rabbit polyclonal antibody raised against recombinant PPM1L.
Immunogen	Recombinant protein corresponding to amino acids of human PPM1L.
Sequence	DLDKLQPEFMILASDGLWDAFSNEEAVRFIKERLDEPHFGAKSMLQSFYRGCPDNITVMVVKFRNSSK
Host	Rabbit
Reactivity	Human
Form	Liquid

Purification	Antigen affinity purification
Isotype	IgG
Recommend Usage	Immunohistochemistry (1:20-1:50) Western Blot (1:250-1:500) The optimal working dilution should be determined by the end user.
Storage Buffer	In PBS, pH 7.2 (40% glycerol, 0.02% sodium azide)
Storage Instruction	Store at 4°C. For long term storage store at -20°C. Aliquot to avoid repeated freezing and thawing.
Note	This product contains sodium azide: a POISONOUS AND HAZARDOUS SUBSTANCE which should be handled by trained staff only.

Applications

- Western Blot (Transfected lysate)

Western blot analysis of Lane 1: Negative control (vector only transfected HEK293T lysate), Lane 2: Over-expression Lysate (Co-expressed with a C-terminal myc-DDK tag (~3.1 kDa) in mammalian HEK293T cells) with PPM1L polyclonal antibody (Cat # PAB21258) at 1:250-1:500 dilution.

- Immunohistochemistry (Formalin/PFA-fixed paraffin-embedded sections)

Immunohistochemical staining of human skeletal muscle with PPM1L polyclonal antibody (Cat # PAB21258) shows heterogeneous cytoplasmic positivity in myocytes at 1:20-1:50 dilution.

Gene Info — PPM1L

Entrez GeneID	151742
Protein Accession#	Q5SGD2
Gene Name	PPM1L
Gene Alias	MGC132545, MGC132547, PP2C-epsilon, PP2CE, PPM1-LIKE
Gene Description	protein phosphatase 1 (formerly 2C)-like
Gene Ontology	Hyperlink
Gene Summary	PPM1L, or PP2CE, belongs to the PP2C group of serine/threonine phosphatases, which are distinguished from other phosphatases by their structure, absolute requirement for Mg(2+) or Mn(2+), and insensitivity to okadaic acid. PP2Cs regulate stress-activated protein kinase (SAPK; see MIM 601158) signaling cascades that respond to extracellular stimuli (Jin et al., 2004 [PubMed 15560375]).[supplied by OMIM]

Other Designations

PP2C epsilon|protein phosphatase 2C epsilon

Disease

- [Celiac Disease](#)
- [Genetic Predisposition to Disease](#)
- [Tobacco Use Disorder](#)