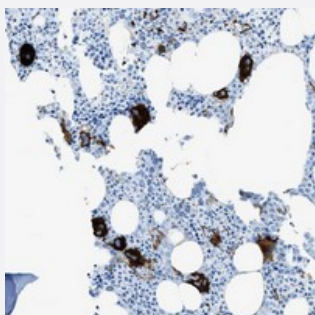


# SLC22A15 polyclonal antibody

Catalog # PAB21238      Size 100 uL

## Applications



### Immunohistochemistry (Formalin/PFA-fixed paraffin-embedded sections)

Immunohistochemical staining of human bone marrow with SLC22A15 polyclonal antibody (Cat # PAB21238) shows strong cytoplasmic positivity in megakaryocytes.

## Specification

<b>Product Description</b>	Rabbit polyclonal antibody raised against recombinant SLC22A15.
<b>Immunogen</b>	Recombinant protein corresponding to amino acids of human SLC22A15.
<b>Sequence</b>	ESPRWLYSQGRLSEAEALYIAKRNRLKCTFSLTHPANRSCRETGSFLDLFR
<b>Host</b>	Rabbit
<b>Reactivity</b>	Human
<b>Form</b>	Liquid
<b>Purification</b>	Antigen affinity purification
<b>Isotype</b>	IgG
<b>Recommend Usage</b>	Immunohistochemistry (1:50-1:200) The optimal working dilution should be determined by the end user.
<b>Storage Buffer</b>	In PBS, pH 7.2 (40% glycerol, 0.02% sodium azide)
<b>Storage Instruction</b>	Store at 4°C. For long term storage store at -20°C. Aliquot to avoid repeated freezing and thawing.

**Note**

This product contains sodium azide: a POISONOUS AND HAZARDOUS SUBSTANCE which should be handled by trained staff only.

## Applications

- Immunohistochemistry (Formalin/PFA-fixed paraffin-embedded sections)

Immunohistochemical staining of human bone marrow with SLC22A15 polyclonal antibody (Cat # PAB21238) shows strong cytoplasmic positivity in megakaryocytes.

## Gene Info — SLC22A15

**Entrez GeneID** [55356](#)

**Protein Accession#** [Q8IZD6](#)

**Gene Name** SLC22A15

**Gene Alias** DKFZp761G0313, FLIPT1, PRO34686

**Gene Description** solute carrier family 22, member 15

**Omim ID** [608275](#)

**Gene Ontology** [Hyperlink](#)

**Gene Summary** Organic ion transporters, such as SLC22A15, transport various medically and physiologically important compounds, including pharmaceuticals, toxins, hormones, neurotransmitters, and cellular metabolites. These transporters are also referred to as amphiphilic solute facilitators (ASFs).[supplied by OMIM]

**Other Designations** fly-like putative organic ion transporter 1|solute carrier family 22 (organic cation transporter), member 15|trans-like protein

## Disease

- [Tobacco Use Disorder](#)