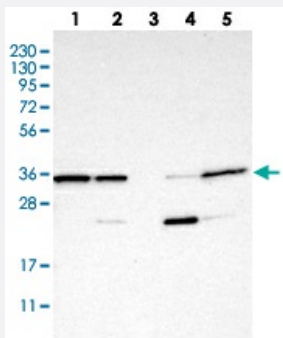


C7orf20 polyclonal antibody

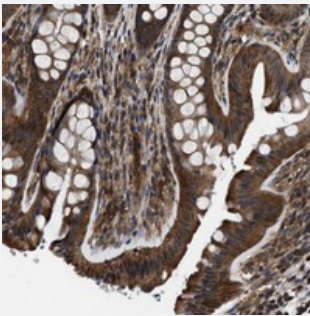
Catalog # PAB21234 Size 100 uL

Applications



Western Blot

Western blot analysis of Lane 1: RT-4, Lane 2: U-251 MG, Lane 3: Human Plasma, Lane 4: Liver, Lane 5: Tonsil with C7orf20 polyclonal antibody (Cat # PAB21234).



Immunohistochemistry (Formalin/PFA-fixed paraffin-embedded sections)

Immunohistochemical staining of human colon with C7orf20 polyclonal antibody (Cat # PAB21234) strong cytoplasmic positivity in glandular cells.

Specification

Product Description	Rabbit polyclonal antibody raised against recombinant C7orf20.
Immunogen	Recombinant protein corresponding to amino acids of human C7orf20.
Sequence	AVDGGKLTFTVLCEQYQPSLRDPMYNEYLDRIQLFFGVPPKQTSSYGGLLGNLLTSLMGSSSE QEDGEESPSDGSPIELD
Host	Rabbit
Reactivity	Human
Form	Liquid

Purification	Antigen affinity purification
Isotype	IgG
Recommend Usage	Immunohistochemistry (1:200-1:500) Western Blot (1:250-1:500) The optimal working dilution should be determined by the end user.
Storage Buffer	In PBS, pH 7.2 (40% glycerol, 0.02% sodium azide)
Storage Instruction	Store at 4°C. For long term storage store at -20°C. Aliquot to avoid repeated freezing and thawing.
Note	This product contains sodium azide: a POISONOUS AND HAZARDOUS SUBSTANCE which should be handled by trained staff only.

Applications

- Western Blot

Western blot analysis of Lane 1: RT-4, Lane 2: U-251 MG, Lane 3: Human Plasma, Lane 4: Liver, Lane 5: Tonsil with C7orf20 polyclonal antibody (Cat # PAB21234).

- Immunohistochemistry (Formalin/PFA-fixed paraffin-embedded sections)

Immunohistochemical staining of human colon with C7orf20 polyclonal antibody (Cat # PAB21234) strong cytoplasmic positivity in glandular cells.

Gene Info — C7orf20

Entrez GeneID	51608
Protein Accession#	Q7L5D6
Gene Name	C7orf20
Gene Alias	CEE, CGI-20
Gene Description	chromosome 7 open reading frame 20
Gene Ontology	Hyperlink
Other Designations	H_NH1244M04.5 conserved edge expressed protein conserved edge protein hypothetical protein LOC51608