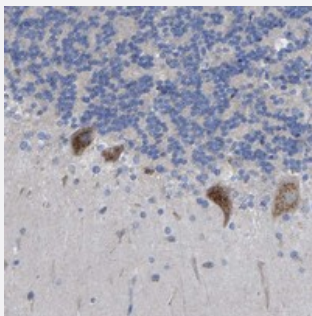


FAM40B polyclonal antibody

Catalog # PAB21228 Size 100 uL

Applications



Immunohistochemistry (Formalin/PFA-fixed paraffin-embedded sections)

Immunohistochemical staining of human cerebellum with FAM40B polyclonal antibody (Cat # PAB21228) shows distinct cytoplasmic positivity in Purkinje cells.

Specification

Product Description	Rabbit polyclonal antibody raised against recombinant FAM40B.
Immunogen	Recombinant protein corresponding to amino acids of human FAM40B.
Sequence	GFEHLQTLKVQKRAELGLPLAEDSIQVVKSMRAASPPSYTLDLGESQLAPPPSKLRGRRGSRR QLLTKQDSLDIY
Host	Rabbit
Reactivity	Human
Form	Liquid
Purification	Antigen affinity purification
Isotype	IgG
Recommend Usage	Immunohistochemistry (1:10-1:20) The optimal working dilution should be determined by the end user.
Storage Buffer	In PBS, pH 7.2 (40% glycerol, 0.02% sodium azide)

Storage Instruction

Store at 4°C. For long term storage store at -20°C.
Aliquot to avoid repeated freezing and thawing.

Note

This product contains sodium azide: a POISONOUS AND HAZARDOUS SUBSTANCE which should be handled by trained staff only.

Applications

- Immunohistochemistry (Formalin/PFA-fixed paraffin-embedded sections)

Immunohistochemical staining of human cerebellum with FAM40B polyclonal antibody (Cat # PAB21228) shows distinct cytoplasmic positivity in Purkinje cells.

Gene Info — FAM40B

Entrez GeneID[57464](#)**Protein Accession#**[Q9ULQ0](#)**Gene Name**

FAM40B

Gene Alias

-

Gene Description

family with sequence similarity 40, member B

Gene Ontology[Hyperlink](#)**Gene Summary**

O

Other Designations

homolog of yeast FAR11 protein 2|hypothetical protein LOC57464