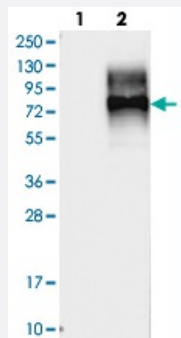


LMBRD1 polyclonal antibody

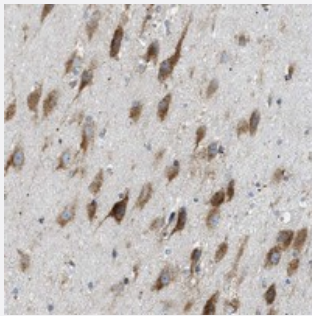
Catalog # PAB21217 Size 100 uL

Applications



Western Blot (Transfected lysate)

Western blot analysis of Lane 1: Negative control (vector only transfected HEK293T lysate), Lane 2: Over-expression Lysate (Co-expressed with a C-terminal myc-DDK tag (~3.1 kDa) in mammalian HEK293T cells) with LMBRD1 polyclonal antibody (Cat # PAB21217).



Immunohistochemistry (Formalin/PFA-fixed paraffin-embedded sections)

Immunohistochemical staining of human hippocampus with LMBRD1 polyclonal antibody (Cat # PAB21217) shows strong cytoplasmic positivity in neuronal cells.

Specification

Product Description	Rabbit polyclonal antibody raised against recombinant LMBRD1.
Immunogen	Recombinant protein corresponding to amino acids of human LMBRD1.
Sequence	KGTRSAAYERLENTEDIEEVEQHIQTIKSKSKDGRPLPARDKRALKQFEERLRTLKKRERHLEFIEN SWWTKFCGALRP
Host	Rabbit
Reactivity	Human
Form	Liquid

Purification	Antigen affinity purification
Isotype	IgG
Recommend Usage	Immunohistochemistry (1:50-1:200) Western Blot (1:250-1:500) The optimal working dilution should be determined by the end user.
Storage Buffer	In PBS, pH 7.2 (40% glycerol, 0.02% sodium azide)
Storage Instruction	Store at 4°C. For long term storage store at -20°C. Aliquot to avoid repeated freezing and thawing.
Note	This product contains sodium azide: a POISONOUS AND HAZARDOUS SUBSTANCE which should be handled by trained staff only.

Applications

- Western Blot (Transfected lysate)

Western blot analysis of Lane 1: Negative control (vector only transfected HEK293T lysate), Lane 2: Over-expression Lysate (Co-expressed with a C-terminal myc-DDK tag (~3.1 kDa) in mammalian HEK293T cells) with LMBRD1 polyclonal antibody (Cat # PAB21217).

- Immunohistochemistry (Formalin/PFA-fixed paraffin-embedded sections)

Immunohistochemical staining of human hippocampus with LMBRD1 polyclonal antibody (Cat # PAB21217) shows strong cytoplasmic positivity in neuronal cells.

Gene Info — LMBRD1

Entrez GeneID	55788
Protein Accession#	Q9NUN5
Gene Name	LMBRD1
Gene Alias	C6orf209, FLJ11240, RP11-810I22.1, bA810I22.1
Gene Description	LMBR1 domain containing 1
Gene Ontology	Hyperlink
Gene Summary	LMBRD1 encodes a putative lysosomal cobalamin exporter (Rutsch et al., 2009 [PubMed 19136951]).[supplied by OMIM]
Other Designations	OTTHUMP00000016693 liver regeneration p-53 related protein

Publication Reference

- [LMBD1 protein participates in cell mitosis by regulating microtubule assembly.](#)

Chiao-Yin Sun, Shin C Chang, Hsiu-Po Wang, Yu-Jung Lee, Kuei-Hsiang Pan, Chieh-Liang Lin, Yu-Ting Hsieh, Yng-Cun Ta, Yau-Hung Chen, Ming-Fu Chang.

The Biochemical Journal 2021 Jun; 478(12):2321.

Application: IF, IP, WB-Ce, WB-Re, WB-Tr, Human, HEK 293, HeLa, Huh7 cells, Recombinant proteins