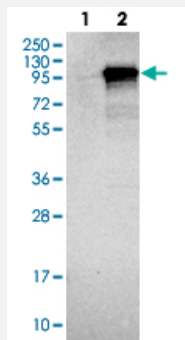


IQCE polyclonal antibody

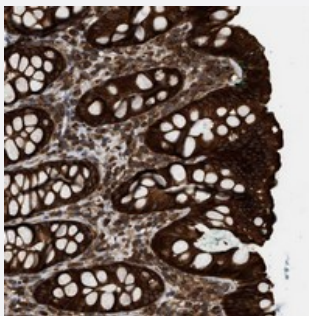
Catalog # PAB21215 Size 100 uL

Applications



Western Blot (Transfected lysate)

Western blot analysis of Lane 1: Negative control (vector only transfected HEK293T lysate).
Lane 2: Over-expression lysate (Co-expressed with a C-terminal myc-DDK tag (~3.1 kDa) in mammalian HEK293T cells with IQCE polyclonal antibody (Cat # PAB21215).



Immunohistochemistry (Formalin/PFA-fixed paraffin-embedded sections)

Immunohistochemical staining of human rectum with IQCE polyclonal antibody (Cat # PAB21215) strong cytoplasmic positivity in glandular cells at 1:500-1:1000 dilution.

Specification

Product Description	Rabbit polyclonal antibody raised against recombinant IQCE.
Immunogen	Recombinant protein corresponding to amino acids of human IQCE.
Sequence	LSRSVQELTEENQSLKEDLDRVLSTPTISKQTQGYVEWSKPRLRRIVELEKKLSVMESSKSHAA EPVRSHPPACCLASSALHRQPRGDRNKDHERLR
Host	Rabbit
Reactivity	Human
Form	Liquid

Purification	Antigen affinity purification
Isotype	IgG
Recommend Usage	Immunohistochemistry (1:500-1:1000) The optimal working dilution should be determined by the end user.
Storage Buffer	In PBS, pH 7.2 (40% glycerol, 0.02% sodium azide)
Storage Instruction	Store at 4°C. For long term storage store at -20°C. Aliquot to avoid repeated freezing and thawing.
Note	This product contains sodium azide: a POISONOUS AND HAZARDOUS SUBSTANCE which should be handled by trained staff only.

Applications

- Western Blot (Transfected lysate)

Western blot analysis of Lane 1: Negative control (vector only transfected HEK293T lysate).

Lane 2: Over-expression lysate (Co-expressed with a C-terminal myc-DDK tag (~3.1 kDa) in mammalian HEK293T cells with IQCE polyclonal antibody (Cat # PAB21215).

- Immunohistochemistry (Formalin/PFA-fixed paraffin-embedded sections)

Immunohistochemical staining of human rectum with IQCE polyclonal antibody (Cat # PAB21215) strong cytoplasmic positivity in glandular cells at 1:500-1:1000 dilution.

Gene Info — IQCE

Entrez GeneID	23288
Protein Accession#	Q6IPM2
Gene Name	IQCE
Gene Alias	1700028P05Rik, KIAA1023, MGC41907
Gene Description	IQ motif containing E
Gene Ontology	Hyperlink
Other Designations	-