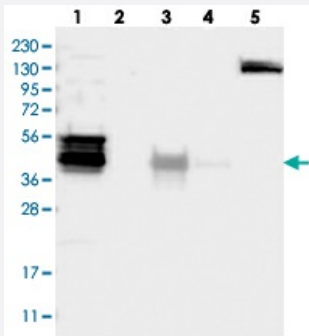


WDR31 polyclonal antibody

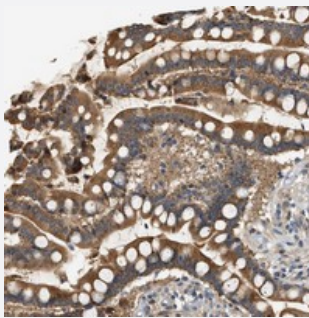
Catalog # PAB21202 Size 100 uL

Applications



Western Blot

Western blot analysis of Lane 1: RT-4, Lane 2: U-251 MG, Lane 3: Human Plasma, Lane 4: Liver, Lane 5: Tonsil with WDR31 polyclonal antibody (Cat # PAB21202) at 1:250-1:500 dilution.



Immunohistochemistry (Formalin/PFA-fixed paraffin-embedded sections)

Immunohistochemical staining of human colon with WDR31 polyclonal antibody (Cat # PAB21202) strong cytoplasmic positivity in glandular cells at 1:200-1:500 dilution.

Specification

Product Description	Rabbit polyclonal antibody raised against recombinant WDR31.
Immunogen	Recombinant protein corresponding to amino acids of human WDR31.
Sequence	REPYLQTSSEDKTLRLWDSRGLQVAHMFPAKQHIQTYCEVSVDGHKCSNGFGGEGCEATLW DLRQTRNRICEYKGHFQTVA
Host	Rabbit
Reactivity	Human
Form	Liquid

Purification	Antigen affinity purification
Isotype	IgG
Recommend Usage	Immunohistochemistry (1:200-1:500) Western Blot (1:250-1:500) The optimal working dilution should be determined by the end user.
Storage Buffer	In PBS, pH 7.2 (40% glycerol, 0.02% sodium azide)
Storage Instruction	Store at 4°C. For long term storage store at -20°C. Aliquot to avoid repeated freezing and thawing.
Note	This product contains sodium azide: a POISONOUS AND HAZARDOUS SUBSTANCE which should be handled by trained staff only.

Applications

- Western Blot

Western blot analysis of Lane 1: RT-4, Lane 2: U-251 MG, Lane 3: Human Plasma, Lane 4: Liver, Lane 5: Tonsil with WDR31 polyclonal antibody (Cat # PAB21202) at 1:250-1:500 dilution.

- Immunohistochemistry (Formalin/PFA-fixed paraffin-embedded sections)

Immunohistochemical staining of human colon with WDR31 polyclonal antibody (Cat # PAB21202) strong cytoplasmic positivity in glandular cells at 1:200-1:500 dilution.

Gene Info — WDR31

Entrez GeneID	114987
Protein Accession#	Q8NA23
Gene Name	WDR31
Gene Alias	FLJ35921
Gene Description	WD repeat domain 31
Gene Ontology	Hyperlink

Gene Summary

This gene encodes a member of the WD repeat protein family. WD repeats are minimally conserved regions of approximately 40 amino acids typically bracketed by gly-his and trp-aspartate (GH-WD), which may facilitate formation of heterotrimeric or multiprotein complexes. Members of this family are involved in a variety of cellular processes, including cell cycle progression, signal transduction, apoptosis, and gene regulation. Multiple alternatively spliced transcript variants encoding distinct isoforms have been found for this gene but the biological validity of some variants has not been determined. [provided by RefSeq]

Other Designations

OTTHUMP00000021958

Disease

- [Brain Ischemia](#)
- [Cardiovascular Diseases](#)
- [Coronary Disease](#)
- [Genetic Predisposition to Disease](#)
- [Myocardial Infarction](#)
- [Stroke](#)