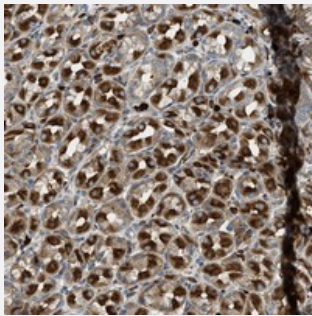


TMEM68 polyclonal antibody

Catalog # PAB21193 Size 100 uL

Applications



Immunohistochemistry (Formalin/PFA-fixed paraffin-embedded sections)

Immunohistochemical staining of human stomach with TMEM68 polyclonal antibody (Cat # PAB21193) shows strong cytoplasmic positivity in Parietal cells at 1:20-1:50 dilution.

Specification

Product Description	Rabbit polyclonal antibody raised against recombinant TMEM68.
Immunogen	Recombinant protein corresponding to amino acids of human TMEM68.
Sequence	RKNVLKEAYSHNLWDGARKTVATLWDGHAAVWHGYEV
Host	Rabbit
Reactivity	Human
Form	Liquid
Purification	Antigen affinity purification
Isotype	IgG
Recommend Usage	Immunohistochemistry (1:20-1:50) The optimal working dilution should be determined by the end user.
Storage Buffer	In PBS, pH 7.2 (40% glycerol, 0.02% sodium azide)
Storage Instruction	Store at 4°C. For long term storage store at -20°C. Aliquot to avoid repeated freezing and thawing.

Note

This product contains sodium azide: a POISONOUS AND HAZARDOUS SUBSTANCE which should be handled by trained staff only.

Applications

- Immunohistochemistry (Formalin/PFA-fixed paraffin-embedded sections)

Immunohistochemical staining of human stomach with TMEM68 polyclonal antibody (Cat # PAB21193) shows strong cytoplasmic positivity in Parietal cells at 1:20-1:50 dilution.

Gene Info — TMEM68

Entrez GeneID [137695](#)

Protein Accession# [Q96MH6](#)

Gene Name TMEM68

Gene Alias FLJ32370, MGC87778

Gene Description transmembrane protein 68

Gene Ontology [Hyperlink](#)

Other Designations -

Disease

- [Tobacco Use Disorder](#)