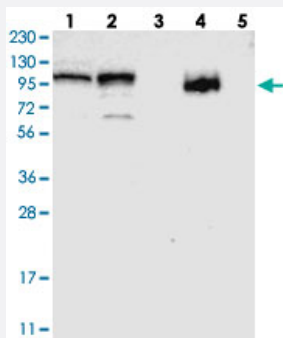


RBM28 polyclonal antibody

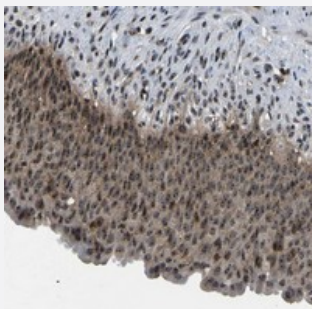
Catalog # PAB21187 Size 100 uL

Applications



Western Blot

Western blot analysis of Lane 1: RT-4, Lane 2: U-251 MG, Lane 3: Human Plasma, Lane 4: Liver, Lane 5: Tonsil with RBM28 polyclonal antibody (Cat # PAB21187).



Immunohistochemistry (Formalin/PFA-fixed paraffin-embedded sections)

Immunohistochemical staining of human urinary bladder with RBM28 polyclonal antibody (Cat # PAB21187) shows nucleolar and cytoplasmic positivity in urothelial cells.

Specification

Product Description	Rabbit polyclonal antibody raised against recombinant RBM28.
Immunogen	Recombinant protein corresponding to amino acids of human RBM28.
Sequence	RKLLLSATSGEKGVRIKECRVMRDLKGVHGNMKGQSLGYAFAEFQEHEHALKALRLINNPEIFG PLKRPIVEFSLEDRRKLKMKELRIQRSLQKMRSKPATGEPQKGQPEPAKDQQQK
Host	Rabbit
Reactivity	Human
Form	Liquid

Purification	Antigen affinity purification
Isotype	IgG
Recommend Usage	Immunohistochemistry (1:20-1:50) Western Blot (1:250-1:500) The optimal working dilution should be determined by the end user.
Storage Buffer	In PBS, pH 7.2 (40% glycerol, 0.02% sodium azide)
Storage Instruction	Store at 4°C. For long term storage store at -20°C. Aliquot to avoid repeated freezing and thawing.
Note	This product contains sodium azide: a POISONOUS AND HAZARDOUS SUBSTANCE which should be handled by trained staff only.

Applications

- Western Blot

Western blot analysis of Lane 1: RT-4, Lane 2: U-251 MG, Lane 3: Human Plasma, Lane 4: Liver, Lane 5: Tonsil with RBM28 polyclonal antibody (Cat # PAB21187).

- Immunohistochemistry (Formalin/PFA-fixed paraffin-embedded sections)

Immunohistochemical staining of human urinary bladder with RBM28 polyclonal antibody (Cat # PAB21187) shows nucleolar and cytoplasmic positivity in urothelial cells.

Gene Info — RBM28

Entrez GeneID	55131
Protein Accession#	Q9NW13
Gene Name	RBM28
Gene Alias	FLJ10377
Gene Description	RNA binding motif protein 28
Gene Ontology	Hyperlink
Other Designations	2810480G15Rik