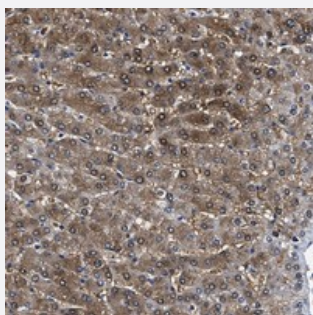


# MOV10L1 polyclonal antibody

Catalog # PAB21186      Size 100 uL

## Applications



### Immunohistochemistry (Formalin/PFA-fixed paraffin-embedded sections)

Immunohistochemical staining of human liver with MOV10L1 polyclonal antibody (Cat # PAB21186) shows moderate cytoplasmic and nuclear positivity in hepatocytes.

## Specification

Product Description	Rabbit polyclonal antibody raised against recombinant MOV10L1.
Immunogen	Recombinant protein corresponding to amino acids of human MOV10L1.
Sequence	EYISYVTEIHEEDVTLKINPEFEQAYNFEPMDVEFTYNRTTSRRCHFALHVIHLGVKVLFP EEIILQS PQVTGNWNHAQDTKSSGQSTSKKNRKTMTDQ
Host	Rabbit
Reactivity	Human
Form	Liquid
Purification	Antigen affinity purification
Isotype	IgG
Recommend Usage	Immunohistochemistry (1:50-1:200) The optimal working dilution should be determined by the end user.
Storage Buffer	In PBS, pH 7.2 (40% glycerol, 0.02% sodium azide)

**Storage Instruction**

Store at 4°C. For long term storage store at -20°C.  
Aliquot to avoid repeated freezing and thawing.

**Note**

This product contains sodium azide: a POISONOUS AND HAZARDOUS SUBSTANCE which should be handled by trained staff only.

## Applications

- Immunohistochemistry (Formalin/PFA-fixed paraffin-embedded sections)

Immunohistochemical staining of human liver with MOV10L1 polyclonal antibody (Cat # PAB21186) shows moderate cytoplasmic and nuclear positivity in hepatocytes.

## Gene Info — MOV10L1

**Entrez GeneID**[54456](#)**Protein Accession#**[Q9BXT6](#)**Gene Name**

MOV10L1

**Gene Alias**

DJ402G11.8, DKFZp434B0717, FLJ33421

**Gene Description**

Mov10l1, Moloney leukemia virus 10-like 1, homolog (mouse)

**Omim ID**[605794](#)**Gene Ontology**[Hyperlink](#)**Gene Summary**

This gene is similar to a mouse gene that encodes a putative RNA helicase and shows testis-specific expression. Multiple transcript variants encoding different isoforms have been found for this gene. [provided by RefSeq]

**Other Designations**

MOV10-like 1|Mov10-like 1|OTTHUMP00000028556

## Disease

- [Tobacco Use Disorder](#)