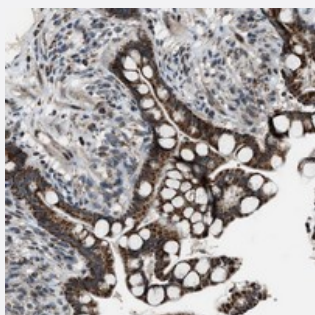


# CHN2 polyclonal antibody

Catalog # PAB21183      Size 100 uL

## Applications



### Immunohistochemistry (Formalin/PFA-fixed paraffin-embedded sections)

Immunohistochemical staining of human colon with CHN2 polyclonal antibody (Cat # PAB21183) shows strong cytoplasmic positivity in granular pattern in glandular cells at 1:20-1:50 dilution.

## Specification

<b>Product Description</b>	Rabbit polyclonal antibody raised against recombinant CHN2.
<b>Immunogen</b>	Recombinant protein corresponding to amino acids of human CHN2.
<b>Sequence</b>	ASSNSSLSGSSVSSDAEEYQPPWKSYLEQLQQEAPRPKRICPREVENRPKY
<b>Host</b>	Rabbit
<b>Reactivity</b>	Human
<b>Form</b>	Liquid
<b>Purification</b>	Antigen affinity purification
<b>Isotype</b>	IgG
<b>Recommend Usage</b>	Immunohistochemistry (1:20-1:50) The optimal working dilution should be determined by the end user.
<b>Storage Buffer</b>	In PBS, pH 7.2 (40% glycerol, 0.02% sodium azide)
<b>Storage Instruction</b>	Store at 4°C. For long term storage store at -20°C. Aliquot to avoid repeated freezing and thawing.

**Note**

This product contains sodium azide: a POISONOUS AND HAZARDOUS SUBSTANCE which should be handled by trained staff only.

## Applications

- Immunohistochemistry (Formalin/PFA-fixed paraffin-embedded sections)

Immunohistochemical staining of human colon with CHN2 polyclonal antibody (Cat # PAB21183) shows strong cytoplasmic positivity in granular pattern in glandular cells at 1:20-1:50 dilution.

## Gene Info — CHN2

Entrez GeneID [1124](#)

Protein Accession# [P52757](#)

Gene Name CHN2

Gene Alias ARHGAP3, BCH, MGC138360, RHOGAP3

Gene Description chimerin (chimaerin) 2

Omim ID [602857](#)

Gene Ontology [Hyperlink](#)

**Gene Summary** This gene is a member of the chimerin family and encodes a protein with a phorbol-ester/DAG-type zinc finger, a Rho-GAP domain and an SH2 domain. This protein has GTPase-activating protein activity that is regulated by phospholipid binding and binding of diacylglycerol (DAG) induces translocation of the protein from the cytosol to the Golgi apparatus membrane. The protein plays a role in the proliferation and migration of smooth muscle cells. Decreased expression of this gene is associated with high-grade gliomas and breast tumors, and increased expression of this gene is associated with lymphomas. Mutations in this gene have been associated with schizophrenia in men. Alternate transcriptional splice variants, encoding different isoforms, have been characterized. [provided by RefSeq]

**Other Designations** beta chimerin|rho-GTPase-activating protein 3

## Disease

- [Angina Pectoris](#)
- [Asthma](#)

- [Cognition](#)
- [Coronary Vasospasm](#)
- [Diabetes Mellitus](#)
- [Diabetic Nephropathies](#)
- [Genetic Predisposition to Disease](#)
- [Tobacco Use Disorder](#)