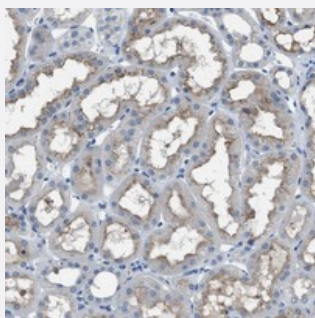


SLC38A6 polyclonal antibody

Catalog # PAB21170 Size 100 uL

Applications



Immunohistochemistry (Formalin/PFA-fixed paraffin-embedded sections)

Immunohistochemical staining of human kidney with SLC38A6 polyclonal antibody (Cat # PAB21170) shows moderate positivity in cytoplasm and membranes.

Specification

Product Description	Rabbit polyclonal antibody raised against recombinant SLC38A6.
Immunogen	Recombinant protein corresponding to amino acids of human SLC38A6.
Sequence	KWSIPCPLTLNYVEKGFQISNVTDDCKPKLFHFSKESA
Host	Rabbit
Reactivity	Human
Form	Liquid
Purification	Antigen affinity purification
Isotype	IgG
Recommend Usage	Immunohistochemistry (1:50-1:200) The optimal working dilution should be determined by the end user.
Storage Buffer	In PBS, pH 7.2 (40% glycerol, 0.02% sodium azide)
Storage Instruction	Store at 4°C. For long term storage store at -20°C. Aliquot to avoid repeated freezing and thawing.

Note

This product contains sodium azide: a POISONOUS AND HAZARDOUS SUBSTANCE which should be handled by trained staff only.

Applications

- Immunohistochemistry (Formalin/PFA-fixed paraffin-embedded sections)

Immunohistochemical staining of human kidney with SLC38A6 polyclonal antibody (Cat # PAB21170) shows moderate positivity in cytoplasm and membranes.

Gene Info — SLC38A6

Entrez GeneID [145389](#)

Protein Accession# [Q8IZM9](#)

Gene Name SLC38A6

Gene Alias MGC102697, NAT-1

Gene Description solute carrier family 38, member 6

Gene Ontology [Hyperlink](#)

Gene Summary O

Other Designations N system amino acid transporter NAT-1|OTTHUMP00000179047