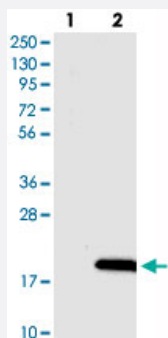


DSCR4 polyclonal antibody

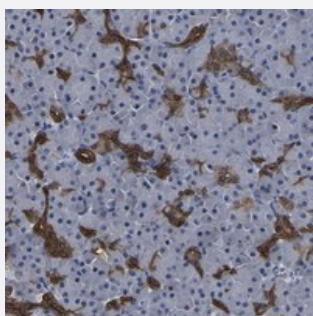
Catalog # PAB21167 Size 100 uL

Applications



Western Blot (Transfected lysate)

Western blot analysis of Lane 1: Negative control (vector only transfected HEK293T lysate), Lane 2: Over-expression Lysate (Co-expressed with a C-terminal myc-DDK tag (~3.1 kDa) in mammalian HEK293T cells) with DSCR4 polyclonal antibody (Cat # PAB21167).



Immunohistochemistry (Formalin/PFA-fixed paraffin-embedded sections)

Immunohistochemical staining of human pancreas with DSCR4 polyclonal antibody (Cat # PAB21167) shows strong cytoplasmic positivity in pancreatic duct cells.

Specification

| | |
|---------------------|---|
| Product Description | Rabbit polyclonal antibody raised against recombinant DSCR4. |
| Immunogen | Recombinant protein corresponding to amino acids of human DSCR4. |
| Sequence | MSLIILTRDDEPRIFTPDSDAASPALHSTSPLPD PASASPLHREEKILPKVCNVSCLSFSLPASPTD SGLASPTITREGQQFWAKCLWKYQLYLHGLHKKSDGR |
| Host | Rabbit |
| Reactivity | Human |
| Form | Liquid |

| | |
|----------------------------|---|
| Purification | Antigen affinity purification |
| Isotype | IgG |
| Recommend Usage | Immunohistochemistry (1:50-1:200) Western Blot (1:250-1:500) The optimal working dilution should be determined by the end user. |
| Storage Buffer | In PBS, pH 7.2 (40% glycerol, 0.02% sodium azide) |
| Storage Instruction | Store at 4°C. For long term storage store at -20°C. Aliquot to avoid repeated freezing and thawing. |
| Note | This product contains sodium azide: a POISONOUS AND HAZARDOUS SUBSTANCE which should be handled by trained staff only. |

Applications

- Western Blot (Transfected lysate)

Western blot analysis of Lane 1: Negative control (vector only transfected HEK293T lysate), Lane 2: Over-expression Lysate (Co-expressed with a C-terminal myc-DDK tag (~3.1 kDa) in mammalian HEK293T cells) with DSCR4 polyclonal antibody (Cat # PAB21167).

- Immunohistochemistry (Formalin/PFA-fixed paraffin-embedded sections)

Immunohistochemical staining of human pancreas with DSCR4 polyclonal antibody (Cat # PAB21167) shows strong cytoplasmic positivity in pancreatic duct cells.

Gene Info — DSCR4

| | |
|---------------------------|--------------------------------------|
| Entrez GeneID | 10281 |
| Protein Accession# | P56555 |
| Gene Name | DSCR4 |
| Gene Alias | DCRB, DSCRB |
| Gene Description | Down syndrome critical region gene 4 |
| Omim ID | 604829 |
| Gene Ontology | Hyperlink |

Gene Summary

The region of chromosome 21 between genes CBR and ERG (CBR-ERG region), which spans 2.5 Mb on 21q22.2, has been defined by analysis of patients with partial trisomy 21. It contributes significantly to the pathogenesis of many characteristics of Down syndrome, including morphological features, hypotonia, and mental retardation. This gene is found in this region and multiple transcripts may exist. It is mainly expressed in the placenta. [provided by RefSeq]

Other Designations

Down syndrome critical region protein 4|Down syndrome critical region protein B