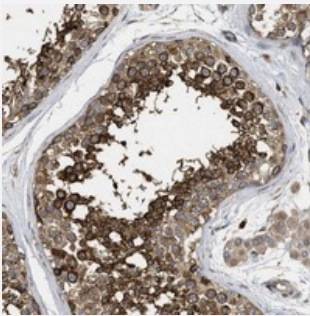


# NAV1 polyclonal antibody

Catalog # PAB21157      Size 100 uL

## Applications



### Immunohistochemistry (Formalin/PFA-fixed paraffin-embedded sections)

Immunohistochemical staining of human testis with NAV1 polyclonal antibody (Cat # PAB21157) shows strong cytoplasmic positivity in seminiferous duct cells at 1:200-1:500 dilution.

## Specification

Product Description	Rabbit polyclonal antibody raised against recombinant NAV1.
Immunogen	Recombinant protein corresponding to amino acids of human NAV1.
Sequence	RETMHNMQLVDLLKAENDRLKVAPGPSSGSTPGQVPGSSALSSPRSLGLALTHSFGPSLADT DLSPMDGISTCGPKEEVTLRVVVRMPPQHIIKGLKQKEFFLGCSKVSQKVDWKMLDEAVFQVF KDYISKMDPASTLGLSTESIH
Host	Rabbit
Reactivity	Human
Form	Liquid
Purification	Antigen affinity purification
Isotype	IgG
Recommend Usage	Immunohistochemistry (1:200-1:500) The optimal working dilution should be determined by the end user.
Storage Buffer	In PBS, pH 7.2 (40% glycerol, 0.02% sodium azide)

**Storage Instruction**

Store at 4°C. For long term storage store at -20°C.  
Aliquot to avoid repeated freezing and thawing.

**Note**

This product contains sodium azide: a POISONOUS AND HAZARDOUS SUBSTANCE which should be handled by trained staff only.

## Applications

- Immunohistochemistry (Formalin/PFA-fixed paraffin-embedded sections)

Immunohistochemical staining of human testis with NAV1 polyclonal antibody (Cat # PAB21157) shows strong cytoplasmic positivity in seminiferous duct cells at 1:200-1:500 dilution.

## Gene Info — NAV1

**Entrez GeneID**[89796](#)**Protein Accession#**[Q8NEY1](#)**Gene Name**

NAV1

**Gene Alias**

DKFZp781D0314, FLJ12560, FLJ14203, KIAA1151, MGC14961, POMFIL3, steerin-1

**Gene Description**

neuron navigator 1

**Omim ID**[611628](#)**Gene Ontology**[Hyperlink](#)**Gene Summary**

This gene belongs to the neuron navigator family and is expressed predominantly in the nervous system. The encoded protein contains coiled-coil domains and a conserved AAA domain characteristic for ATPases associated with a variety of cellular activities. This gene is similar to unc-53, a *Caenorhabditis elegans* gene involved in axon guidance. The exact function of this gene is not known. [provided by RefSeq]

**Other Designations**

neuron navigator-1|pore membrane and/or filament interacting like protein 3