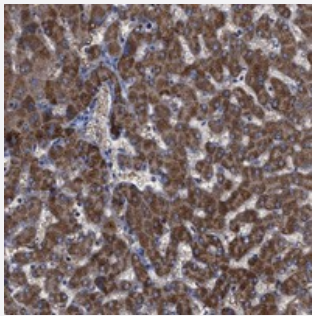


GPR179 polyclonal antibody

Catalog # PAB21151 Size 100 uL

Applications



Immunohistochemistry (Formalin/PFA-fixed paraffin-embedded sections)

Immunohistochemical staining of human liver with GPR179 polyclonal antibody (Cat # PAB21151) shows distinct cytoplasmic positivity in hepatocytes at 1:200-1:500 dilution.

Specification

Product Description	Rabbit polyclonal antibody raised against recombinant GPR179.
Immunogen	Recombinant protein corresponding to amino acids of human GPR179.
Sequence	LNMLLQANDIRESSVEEDVEWYQALVRSVAEGDPRVYRALLTFNPPPGASHLQLALQATRTGEET ILQDLSGNWWQEENPPGDLDTPALKKRVLNDLGS LGSPKWPQADGYVGDTQQVRLSPPFLEC QEGRLRPGWLITLSATF
Host	Rabbit
Reactivity	Human
Form	Liquid
Purification	Antigen affinity purification
Isotype	IgG
Recommend Usage	Immunohistochemistry (1:200-1:500) The optimal working dilution should be determined by the end user.
Storage Buffer	In PBS, pH 7.2 (40% glycerol, 0.02% sodium azide)

Storage Instruction

Store at 4°C. For long term storage store at -20°C.
Aliquot to avoid repeated freezing and thawing.

Note

This product contains sodium azide: a POISONOUS AND HAZARDOUS SUBSTANCE which should be handled by trained staff only.

Applications

- Immunohistochemistry (Formalin/PFA-fixed paraffin-embedded sections)

Immunohistochemical staining of human liver with GPR179 polyclonal antibody (Cat # PAB21151) shows distinct cytoplasmic positivity in hepatocytes at 1:200-1:500 dilution.

Gene Info — GPR179

Entrez GeneID[440435](#)**Protein Accession#**[Q6PRD1](#)**Gene Name**

GPR179

Gene Alias

GPR158L1

Gene Description

G protein-coupled receptor 179

Gene Ontology[Hyperlink](#)**Other Designations**

GPR158-like 1|OTTHUMP00000163081