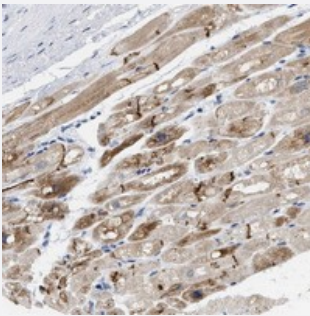


XIRP1 polyclonal antibody

Catalog # PAB21141 Size 100 uL

Applications



Immunohistochemistry (Formalin/PFA-fixed paraffin-embedded sections)

Immunohistochemical staining of human heart muscle with XIRP1 polyclonal antibody (Cat # PAB21141) shows moderate cytoplasmic positivity in myocytes at 1:1000-1:2500 dilution.

Specification

Product Description	Rabbit polyclonal antibody raised against recombinant XIRP1.
Immunogen	Recombinant protein corresponding to amino acids of human XIRP1.
Sequence	QSCTWMFKPQPVDPRVGSREQHLQVSQVPAGERQTDRHVFETETPLQASGRPCGRRPVRYCSR VEIPSGQVSRQKEVFQALEAGKKEEQEPRVIAGSIPAGSVHKFT
Host	Rabbit
Reactivity	Human
Form	Liquid
Purification	Antigen affinity purification
Isotype	IgG
Recommend Usage	Immunohistochemistry (1:1000-1:2500) The optimal working dilution should be determined by the end user.
Storage Buffer	In PBS, pH 7.2 (40% glycerol, 0.02% sodium azide)

Storage Instruction

Store at 4°C. For long term storage store at -20°C.
Aliquot to avoid repeated freezing and thawing.

Note

This product contains sodium azide: a POISONOUS AND HAZARDOUS SUBSTANCE which should be handled by trained staff only.

Applications

- Immunohistochemistry (Formalin/PFA-fixed paraffin-embedded sections)

Immunohistochemical staining of human heart muscle with XIRP1 polyclonal antibody (Cat # PAB21141) shows moderate cytoplasmic positivity in myocytes at 1:1000-1:2500 dilution.

Gene Info — XIRP1

Entrez GeneID[165904](#)**Protein Accession#**[Q702N8](#)**Gene Name**

XIRP1

Gene Alias

CMYA1, DKFZp451D042, DKFZp779C1255, DKFZp779C1947, Xin

Gene Description

xin actin-binding repeat containing 1

Omim ID[609777](#)**Gene Ontology**[Hyperlink](#)**Other Designations**

cardiomyopathy associated 1