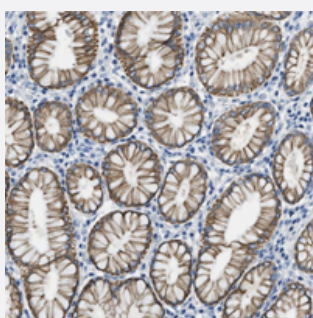


SLC6A6 polyclonal antibody

Catalog # PAB21138 Size 100 uL

Applications



Immunohistochemistry (Formalin/PFA-fixed paraffin-embedded sections)

Immunohistochemical staining of human duodenum with SLC6A6 polyclonal antibody (Cat # PAB21138) shows cytoplasmic positivity in glandular cells.

Specification

Product Description	Rabbit polyclonal antibody raised against recombinant SLC6A6.
Immunogen	Recombinant protein corresponding to amino acids of human SLC6A6.
Sequence	GPFLVRVKYLLTPREPNRWAVEREGATPYSRTVMNGALVKPTHIVETM
Host	Rabbit
Reactivity	Human
Form	Liquid
Purification	Antigen affinity purification
Isotype	IgG
Recommend Usage	Immunohistochemistry (1:20-1:50) The optimal working dilution should be determined by the end user.
Storage Buffer	In PBS, pH 7.2 (40% glycerol, 0.02% sodium azide)
Storage Instruction	Store at 4°C. For long term storage store at -20°C. Aliquot to avoid repeated freezing and thawing.

Note

This product contains sodium azide: a POISONOUS AND HAZARDOUS SUBSTANCE which should be handled by trained staff only.

Applications

- Immunohistochemistry (Formalin/PFA-fixed paraffin-embedded sections)

Immunohistochemical staining of human duodenum with SLC6A6 polyclonal antibody (Cat # PAB21138) shows cytoplasmic positivity in glandular cells.

Gene Info — SLC6A6

Entrez GeneID	6533
Protein Accession#	P31641
Gene Name	SLC6A6
Gene Alias	MGC10619, MGC131729, TAUT
Gene Description	solute carrier family 6 (neurotransmitter transporter, taurine), member 6
Omim ID	186854
Gene Ontology	Hyperlink
Gene Summary	taurine)
Other Designations	-

Disease

- [Genetic Predisposition to Disease](#)
- [Hyperparathyroidism](#)