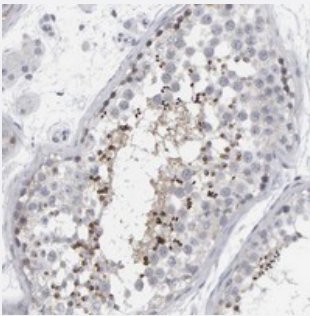


# C9orf11 polyclonal antibody

Catalog # PAB21134      Size 100 uL

## Applications



### Immunohistochemistry (Formalin/PFA-fixed paraffin-embedded sections)

Immunohistochemical staining of human testis with C9orf11 polyclonal antibody (Cat # PAB21134) shows strong cytoplasmic positivity in a subset of seminiferous duct cells.

## Specification

<b>Product Description</b>	Rabbit polyclonal antibody raised against recombinant C9orf11.
<b>Immunogen</b>	Recombinant protein corresponding to amino acids of human C9orf11.
<b>Sequence</b>	EDVNKQEEKNEDHTPNYAPANEKNGNYYKDIKQYVFTTQNPNGTESEISVRATTDLNFALKNGSTP NVPAFWTMLAKAINGTAVVMDDKDQLFHPIESDVNATQGENQPDLEDLKI
<b>Host</b>	Rabbit
<b>Reactivity</b>	Human
<b>Form</b>	Liquid
<b>Purification</b>	Antigen affinity purification
<b>Isotype</b>	IgG
<b>Recommend Usage</b>	Immunohistochemistry (1:200-1:500) The optimal working dilution should be determined by the end user.
<b>Storage Buffer</b>	In PBS, pH 7.2 (40% glycerol, 0.02% sodium azide)

**Storage Instruction**

Store at 4°C. For long term storage store at -20°C.  
Aliquot to avoid repeated freezing and thawing.

**Note**

This product contains sodium azide: a POISONOUS AND HAZARDOUS SUBSTANCE which should be handled by trained staff only.

## Applications

- Immunohistochemistry (Formalin/PFA-fixed paraffin-embedded sections)

Immunohistochemical staining of human testis with C9orf11 polyclonal antibody (Cat # PAB21134) shows strong cytoplasmic positivity in a subset of seminiferous duct cells.

## Gene Info — C9orf11

**Entrez GeneID**[54586](#)**Protein Accession#**[Q9NQ60](#)**Gene Name**

C9orf11

**Gene Alias**

Afaf

**Gene Description**

chromosome 9 open reading frame 11

**Gene Ontology**[Hyperlink](#)**Other Designations**

Acr formation associated factor|Acrosome formation associated factor|OTTHUMP00000022786

## Disease

- [Tobacco Use Disorder](#)