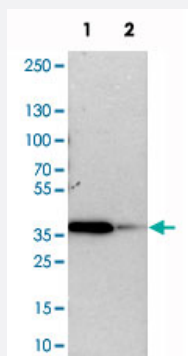


TOR1B polyclonal antibody

Catalog # PAB21122 Size 100 uL

Applications

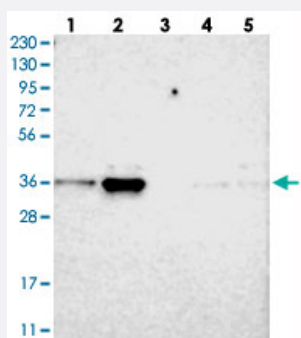


Western Blot (Cell lysate)

Western blot analysis of cell lysates with TOR1B polyclonal antibody (Cat # PAB21122).

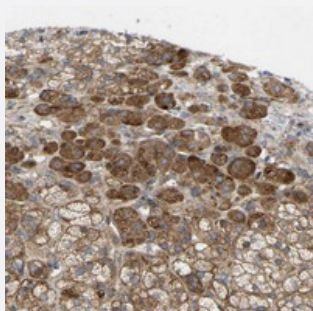
Lane 1 : NIH/3T3

Lane 2 : NBT-II



Western Blot

Western blot analysis of Lane 1: RT-4, Lane 2: U-251 MG, Lane 3: Human Plasma, Lane 4: Liver, Lane 5: Tonsil with TOR1B polyclonal antibody (Cat # PAB21122).



Immunohistochemistry (Formalin/PFA-fixed paraffin-embedded sections)

Immunohistochemical staining of human adrenal gland with TOR1B polyclonal antibody (Cat # PAB21122) shows strong cytoplasmic positivity in cortical cells.

Specification

Product Description

Rabbit polyclonal antibody raised against recombinant TOR1B.

Immunogen	Recombinant protein corresponding to amino acids of human TOR1B.
Sequence	LITKTALDFWRAGRKRKREDIQLKDLEPVLSVGVFNNKHSGLWHSGGLIDKNLIDYFIPFLPLEYRHVKM CVRAEMRARGSAIDEDIVTRVAEEMTFFPRDEKIYSDKGCKTVQSRPDFH
Host	Rabbit
Reactivity	Human, Mouse, Rat
Form	Liquid
Purification	Antigen affinity purification
Isotype	IgG
Recommend Usage	Immunohistochemistry (1:20-1:50) Western Blot (1:250-1:500) The optimal working dilution should be determined by the end user.
Storage Buffer	In PBS, pH 7.2 (40% glycerol, 0.02% sodium azide)
Storage Instruction	Store at 4°C. For long term storage store at -20°C. Aliquot to avoid repeated freezing and thawing.
Note	This product contains sodium azide: a POISONOUS AND HAZARDOUS SUBSTANCE which should be handled by trained staff only.

Applications

- Western Blot (Cell lysate)

Western blot analysis of cell lysates with TOR1B polyclonal antibody (Cat # PAB21122).

Lane 1 : NIH/3T3

Lane 2 : NBT-II

- Western Blot

Western blot analysis of Lane 1: RT-4, Lane 2: U-251 MG, Lane 3: Human Plasma, Lane 4: Liver, Lane 5: Tonsil with TOR1B polyclonal antibody (Cat # PAB21122).

- Immunohistochemistry (Formalin/PFA-fixed paraffin-embedded sections)

Immunohistochemical staining of human adrenal gland with TOR1B polyclonal antibody (Cat # PAB21122) shows strong cytoplasmic positivity in cortical cells.

Gene Info — TOR1B

Entrez GeneID

[27348](#)

Protein Accession#	O14657
Gene Name	TOR1B
Gene Alias	DQ1, MGC4386
Gene Description	torsin family 1, member B (torsin B)
Omim ID	608050
Gene Ontology	Hyperlink
Gene Summary	O
Other Designations	OTTHUMP00000022350

Disease

- [Dystonic Disorders](#)
- [Genetic Predisposition to Disease](#)