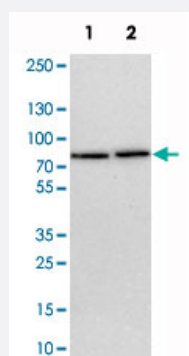


TBC1D15 polyclonal antibody

Catalog # PAB21121 Size 100 uL

Applications

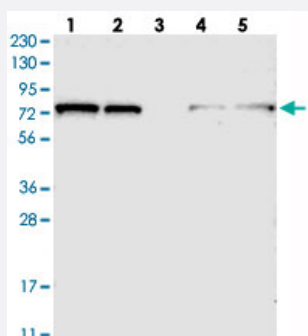


Western Blot (Cell lysate)

Western blot analysis of cell lysates with TBC1D15 polyclonal antibody (Cat # PAB21121) at 1:250-1:500 dilution.

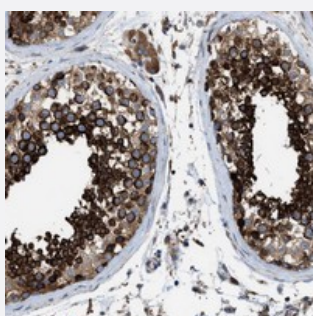
Lane 1 : NIH/3T3

Lane 2 : NBT-II



Western Blot

Western blot analysis of Lane 1: RT-4, Lane 2: U-251 MG, Lane 3: Human Plasma, Lane 4: Liver, Lane 5: Tonsil with TBC1D15 polyclonal antibody (Cat # PAB21121) at 1:250-1:500 dilution.



Immunohistochemistry (Formalin/PFA-fixed paraffin-embedded sections)

Immunohistochemical staining of human testis with TBC1D15 polyclonal antibody (Cat # PAB21121) shows strong cytoplasmic positivity in cells in seminiferous ducts at 1:20-1:50 dilution.

Specification

Product Description

Rabbit polyclonal antibody raised against recombinant TBC1D15.

Immunogen	Recombinant protein corresponding to amino acids of human TBC1D15.
Sequence	DSKLLIESLEKYVVLCESPQDKRTLTVNCQNKSLSQSFENLLDEPAYGLIQIKKDPYTATMIGFSK VTNYIFDSLGRGSDPSTHQRPPSEMAFLSDAIPGLKINQQEPPGFVITRI
Host	Rabbit
Reactivity	Human, Mouse, Rat
Form	Liquid
Purification	Antigen affinity purification
Isotype	IgG
Recommend Usage	Immunohistochemistry (1:20-1:50) Western Blot (1:250-1:500) The optimal working dilution should be determined by the end user.
Storage Buffer	In PBS, pH 7.2 (40% glycerol, 0.02% sodium azide)
Storage Instruction	Store at 4°C. For long term storage store at -20°C. Aliquot to avoid repeated freezing and thawing.
Note	This product contains sodium azide: a POISONOUS AND HAZARDOUS SUBSTANCE which should be handled by trained staff only.

Applications

- Western Blot (Cell lysate)

Western blot analysis of cell lysates with TBC1D15 polyclonal antibody (Cat # PAB21121) at 1:250-1:500 dilution.

Lane 1 : NIH/3T3

Lane 2 : NBT-II

- Western Blot

Western blot analysis of Lane 1: RT-4, Lane 2: U-251 MG, Lane 3: Human Plasma, Lane 4: Liver, Lane 5: Tonsil with TBC1D15 polyclonal antibody (Cat # PAB21121) at 1:250-1:500 dilution.

- Immunohistochemistry (Formalin/PFA-fixed paraffin-embedded sections)

Immunohistochemical staining of human testis with TBC1D15 polyclonal antibody (Cat # PAB21121) shows strong cytoplasmic positivity in cells in seminiferous ducts at 1:20-1:50 dilution.

Gene Info — TBC1D15

Entrez GeneID

[64786](#)

Protein Accession#	Q8TC07
Gene Name	TBC1D15
Gene Alias	DKFZp686M1379, DKFZp761D0223, FLJ12085
Gene Description	TBC1 domain family, member 15
Gene Ontology	Hyperlink
Gene Summary	This gene encodes a member of the Ras-like proteins in brain-GTPase activating protein superfamily that share a conserved Tre-2/Bub2/Cdc16 domain. The encoded protein interacts with Ras-like protein in brain 5A and may function as a regulator of intracellular trafficking. Alternate splicing results in multiple transcript variants. [provided by RefSeq]
Other Designations	-