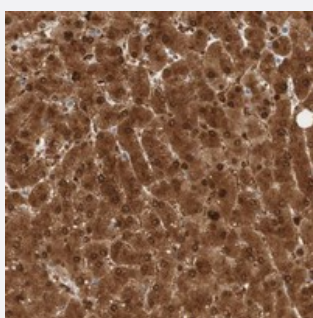


SELENBP1 polyclonal antibody

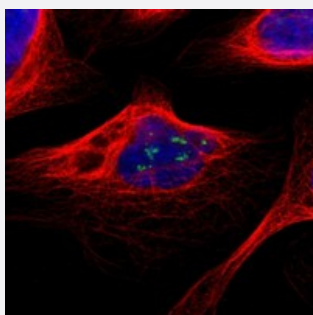
Catalog # PAB21115 Size 100 uL

Applications



Immunohistochemistry (Formalin/PFA-fixed paraffin-embedded sections)

Immunohistochemical staining of human liver with SELENBP1 polyclonal antibody (Cat # PAB21115) shows strong nuclear and cytoplasmic positivity in hepatocytes.



Immunofluorescence

Immunofluorescent staining of human cell line U-2 OS with SELENBP1 polyclonal antibody (Cat # PAB21115) at 1-4 ug/mL dilution shows positivity in nucleoli.

Specification

Product Description	Rabbit polyclonal antibody raised against recombinant SELENBP1.
Immunogen	Recombinant protein corresponding to amino acids of human SELENBP1.
Sequence	TWSVEKVIQVPPKKVKGWLLPEMPGLITDILLSLDDRFLYFSNWLHGDRLRQYDISDPQRPRLTGQL FLGGSIVKGGPVQVLEDEELKSQPEPLVVKGKRVAGGPQMIQLSLDGKRLYTTSLYSAWDKQFY PDLI
Host	Rabbit
Reactivity	Human
Form	Liquid

Purification	Antigen affinity purification
Isotype	IgG
Recommend Usage	Immunohistochemistry (1:20-1:50) Immunofluorescence (1-4 ug/mL) The optimal working dilution should be determined by the end user.
Storage Buffer	In PBS, pH 7.2 (40% glycerol, 0.02% sodium azide)
Storage Instruction	Store at 4°C. For long term storage store at -20°C. Aliquot to avoid repeated freezing and thawing.
Note	This product contains sodium azide: a POISONOUS AND HAZARDOUS SUBSTANCE which should be handled by trained staff only.

Applications

- Immunohistochemistry (Formalin/PFA-fixed paraffin-embedded sections)

Immunohistochemical staining of human liver with SELENBP1 polyclonal antibody (Cat # PAB21115) shows strong nuclear and cytoplasmic positivity in hepatocytes.

- Immunofluorescence

Immunofluorescent staining of human cell line U-2 OS with SELENBP1 polyclonal antibody (Cat # PAB21115) at 1-4 ug/mL dilution shows positivity in nucleoli.

Gene Info — SELENBP1

Entrez GeneID	8991
Protein Accession#	Q13228
Gene Name	SELENBP1
Gene Alias	FLJ13813, LPSB, SP56, hSBP, hSP56
Gene Description	selenium binding protein 1
Omim ID	604188
Gene Ontology	Hyperlink

Gene Summary

This gene product belongs to the selenium-binding protein family. Selenium is an essential nutrient that exhibits potent anticarcinogenic properties, and deficiency of selenium may cause certain neurologic diseases. It has been proposed that the effects of selenium in preventing cancer and neurologic diseases may be mediated by selenium-binding proteins. The exact function of this gene is not known. [provided by RefSeq]

Other Designations

-

Disease

- [Genetic Predisposition to Disease](#)
- [Ovarian Neoplasms](#)
- [Schizophrenia](#)