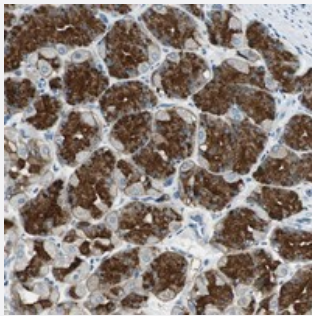


# NKAIN1 polyclonal antibody

Catalog # PAB21108      Size 100 uL

## Applications



### Immunohistochemistry (Formalin/PFA-fixed paraffin-embedded sections)

Immunohistochemical staining of human stomach with NKAIN1 polyclonal antibody (Cat # PAB21108) strong cytoplasmic positivity in glandular cells at 1:20-1:50 dilution.

## Specification

<b>Product Description</b>	Rabbit polyclonal antibody raised against recombinant NKAIN1.
<b>Immunogen</b>	Recombinant protein corresponding to amino acids of human NKAIN1.
<b>Sequence</b>	DRDFIMTFNTSLHRSWWMENGPGLVTPVLNSRLALEDHHVISVTGCLLDYPY
<b>Host</b>	Rabbit
<b>Reactivity</b>	Human
<b>Form</b>	Liquid
<b>Purification</b>	Antigen affinity purification
<b>Isotype</b>	IgG
<b>Recommend Usage</b>	Immunohistochemistry (1:20-1:50) The optimal working dilution should be determined by the end user.
<b>Storage Buffer</b>	In PBS, pH 7.2 (40% glycerol, 0.02% sodium azide)
<b>Storage Instruction</b>	Store at 4°C. For long term storage store at -20°C. Aliquot to avoid repeated freezing and thawing.

**Note**

This product contains sodium azide: a POISONOUS AND HAZARDOUS SUBSTANCE which should be handled by trained staff only.

## Applications

- Immunohistochemistry (Formalin/PFA-fixed paraffin-embedded sections)

Immunohistochemical staining of human stomach with NKAIN1 polyclonal antibody (Cat # PAB21108) strong cytoplasmic positivity in glandular cells at 1:20-1:50 dilution.

## Gene Info — NKAIN1

**Entrez GeneID** [79570](#)

**Protein Accession#** [Q4KMZ8](#)

**Gene Name** NKAIN1

**Gene Alias** FAM77C, FLJ12650

**Gene Description** Na<sup>+</sup>/K<sup>+</sup> transporting ATPase interacting 1

**Gene Ontology** [Hyperlink](#)

**Gene Summary** NKAIN1 is a member of a family of mammalian proteins with similarity to Drosophila Nkain and interacts with the beta subunit of Na,K-ATPase (ATP1B1; MIM 182330) (Gorokhova et al., 2007 [PubMed 17606467]).[supplied by OMIM]

**Other Designations** family with sequence similarity 77, member C