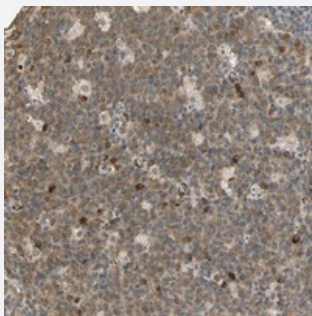


QSER1 polyclonal antibody

Catalog # PAB21101 Size 100 uL

Applications



Immunohistochemistry (Formalin/PFA-fixed paraffin-embedded sections)

Immunohistochemical staining of human lymph node with QSER1 polyclonal antibody (Cat # PAB21101) shows cytoplasmic positivity in reaction center cells.

Specification

Product Description	Rabbit polyclonal antibody raised against recombinant QSER1.
Immunogen	Recombinant protein corresponding to amino acids of human QSER1.
Sequence	QQHIETPGQNIPTKVTSVVGPSHEVQEQSSGPFKKQSATNLESEEDSEAPVDSTLNNNRNQE VSSSRISGESATSESEFTLGGDDSGVSMNPARSALALLAMAQSGDAVSVKIEEENQDLMHFNL QKKRAKGKGQVK
Host	Rabbit
Reactivity	Human
Form	Liquid
Purification	Antigen affinity purification
Isotype	IgG
Recommend Usage	Immunohistochemistry (1:50-1:200) The optimal working dilution should be determined by the end user.
Storage Buffer	In PBS, pH 7.2 (40% glycerol, 0.02% sodium azide)

Storage Instruction

Store at 4°C. For long term storage store at -20°C.
Aliquot to avoid repeated freezing and thawing.

Note

This product contains sodium azide: a POISONOUS AND HAZARDOUS SUBSTANCE which should be handled by trained staff only.

Applications

- Immunohistochemistry (Formalin/PFA-fixed paraffin-embedded sections)

Immunohistochemical staining of human lymph node with QSER1 polyclonal antibody (Cat # PAB21101) shows cytoplasmic positivity in reaction center cells.

Gene Info — QSER1

Entrez GeneID[79832](#)**Protein Accession#**[Q2KHR3](#)**Gene Name**

QSER1

Gene Alias

FLJ21924

Gene Description

glutamine and serine rich 1

Gene Ontology[Hyperlink](#)**Other Designations**

-