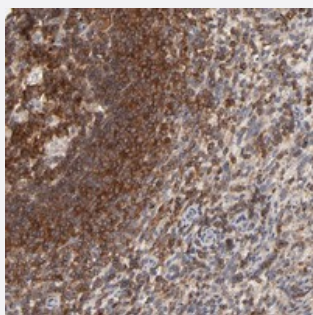


WIPF1 polyclonal antibody

Catalog # PAB21090 Size 100 uL

Applications



Immunohistochemistry (Formalin/PFA-fixed paraffin-embedded sections)

Immunohistochemical staining of human spleen with WIPF1 polyclonal antibody (Cat # PAB21090) shows strong cytoplasmic positivity in cells in red pulp and cells in white pulp.

Specification

Product Description	Rabbit polyclonal antibody raised against recombinant WIPF1.
Immunogen	Recombinant protein corresponding to amino acids of human WIPF1.
Sequence	PPPPVSRNGSTSRALPATPQLPSRSGVDSRSGPRPPLPPDRPSAGAPPPPPSTSIKNGFQD SPCEDEWESRFYFHPISDLPPPEPYVQTTKSYPSKLARNESRSGSNRRERAGP
Host	Rabbit
Reactivity	Human
Form	Liquid
Purification	Antigen affinity purification
Isotype	IgG
Recommend Usage	Immunohistochemistry (1:50-1:200) The optimal working dilution should be determined by the end user.
Storage Buffer	In PBS, pH 7.2 (40% glycerol, 0.02% sodium azide)

Storage Instruction

Store at 4°C. For long term storage store at -20°C.
Aliquot to avoid repeated freezing and thawing.

Note

This product contains sodium azide: a POISONOUS AND HAZARDOUS SUBSTANCE which should be handled by trained staff only.

Applications

- Immunohistochemistry (Formalin/PFA-fixed paraffin-embedded sections)

Immunohistochemical staining of human spleen with WIPF1 polyclonal antibody (Cat # PAB21090) shows strong cytoplasmic positivity in cells in red pulp and cells in white pulp.

Gene Info — WIPF1

Entrez GeneID[7456](#)**Protein Accession#**[O43516](#)**Gene Name**

WIPF1

Gene Alias

MGC111041, PRPL-2, WASPIP, WIP

Gene Description

WAS/WASL interacting protein family, member 1

Omim ID[602357](#)**Gene Ontology**[Hyperlink](#)**Gene Summary**

This gene encodes a protein that plays an important role in the organization of the actin cytoskeleton. The encoded protein binds to a region of Wiskott-Aldrich syndrome protein that is frequently mutated in Wiskott-Aldrich syndrome, an X-linked recessive disorder. Impairment of the interaction between these two proteins may contribute to the disease. Two transcript variants encoding the same protein have been identified for this gene. [provided by RefSeq]

Other Designations

OTTHUMP00000163178|Wiskott-Aldrich syndrome protein interacting protein