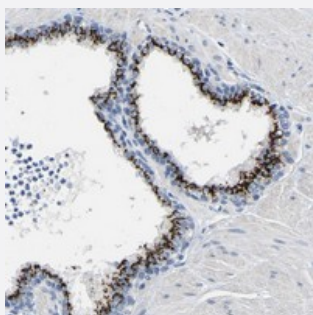


SLC45A3 polyclonal antibody

Catalog # PAB21057 Size 100 uL

Applications



Immunohistochemistry (Formalin/PFA-fixed paraffin-embedded sections)

Immunohistochemical staining of human prostate with SLC45A3 polyclonal antibody (Cat # PAB21057) strong cytoplasmic positivity in glandular cells at 1:50-1:200 dilution.

Specification

Product Description	Rabbit polyclonal antibody raised against recombinant SLC45A3.
Immunogen	Recombinant protein corresponding to amino acids of human SLC45A3.
Sequence	PKYRGDTGGASSED SLMTSFLPGPKPGAPFPNGHVGAGGSGLLP PPPALCGASACDVSVRVV VGEP
Host	Rabbit
Reactivity	Human
Form	Liquid
Purification	Antigen affinity purification
Isotype	IgG
Recommend Usage	Immunohistochemistry (1:50-1:200) The optimal working dilution should be determined by the end user.
Storage Buffer	In PBS, pH 7.2 (40% glycerol, 0.02% sodium azide)

Storage Instruction

Store at 4°C. For long term storage store at -20°C.
Aliquot to avoid repeated freezing and thawing.

Note

This product contains sodium azide: a POISONOUS AND HAZARDOUS SUBSTANCE which should be handled by trained staff only.

Applications

- Immunohistochemistry (Formalin/PFA-fixed paraffin-embedded sections)

Immunohistochemical staining of human prostate with SLC45A3 polyclonal antibody (Cat # PAB21057) strong cytoplasmic positivity in glandular cells at 1:50-1:200 dilution.

Gene Info — SLC45A3

Entrez GeneID[85414](#)**Protein Accession#**[Q96JT2](#)**Gene Name**

SLC45A3

Gene Alias

IPCA-2, IPCA-6, IPCA-8, IPCA6, PCANAP2, PCANAP6, PCANAP8, PRST

Gene Description

solute carrier family 45, member 3

Omim ID[605097](#)**Gene Ontology**[Hyperlink](#)**Gene Summary**

O

Other Designations

OTTHUMP00000035340|prostate cancer associated protein 2|prostate cancer associated protein 6|prostate cancer associated protein 8|prostate cancer-associated gene 2|prostate cancer-associated gene 6|prostate cancer-associated gene 8|protein